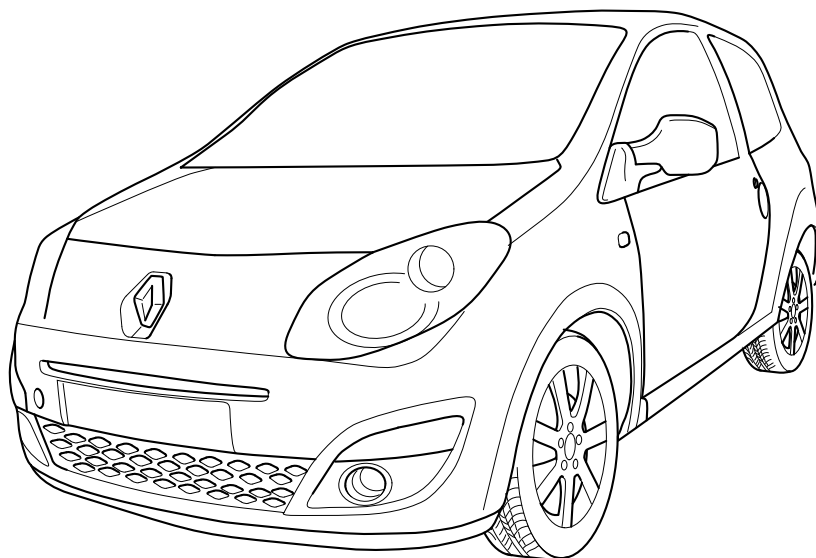


# JAEGER

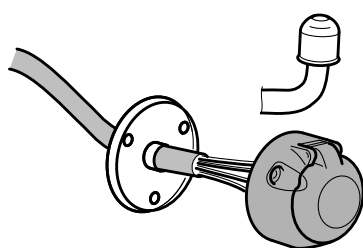


**RENAULT Twingo 2 Phase 1**

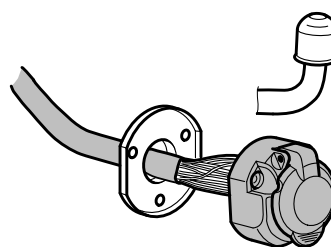
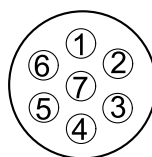
**09/07 >> 12/11**

**736895**

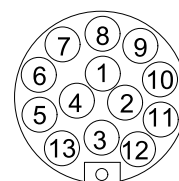
**748995**



**7-PIN**



**13-PIN**



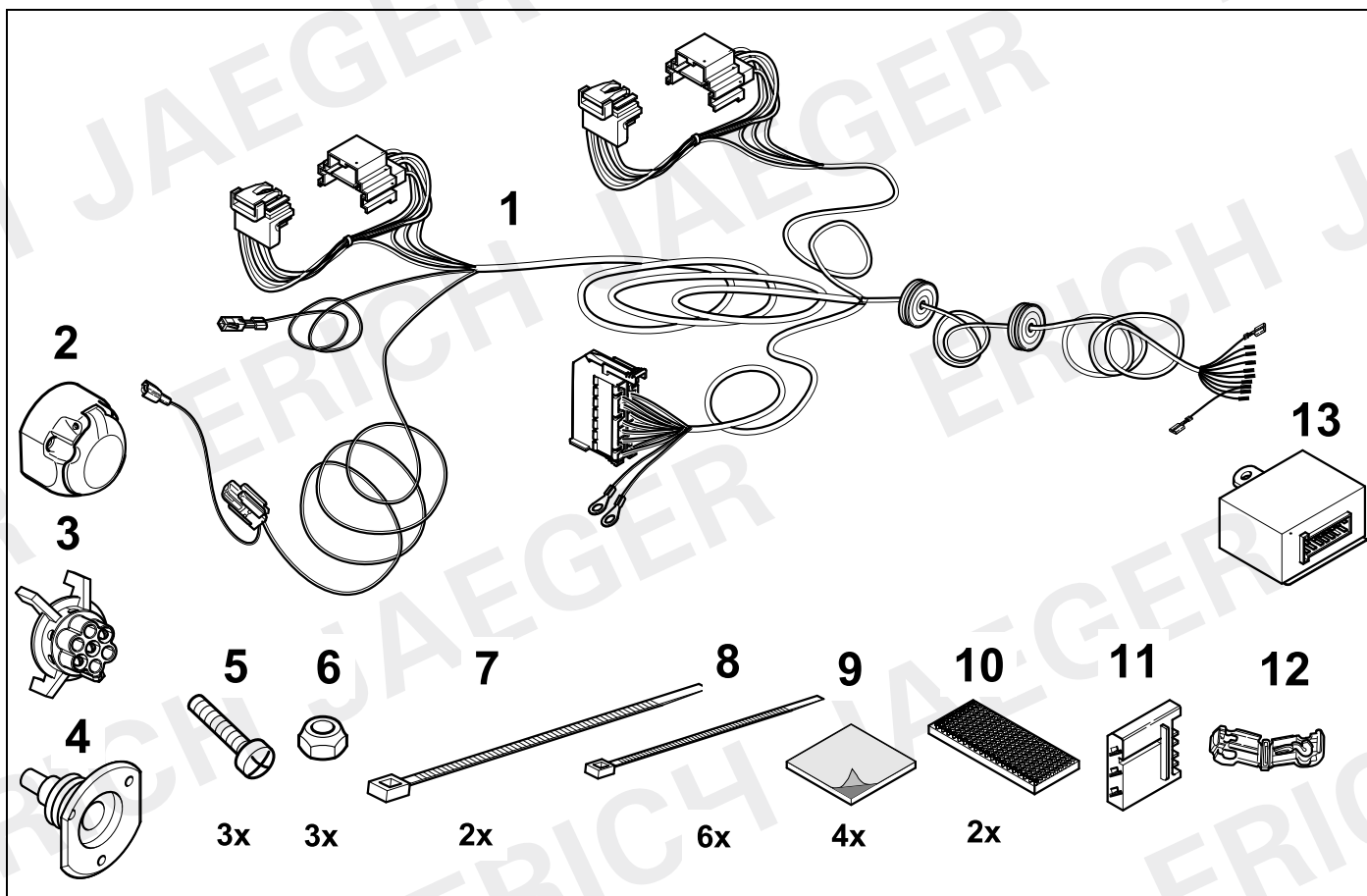
- (D) **Einbauanleitung**
- (GB) **Installation instructions**
- (F) **Consignes de montage**
- (NL) **Montagehandleiding**
- (DK) **Montagevejledning**
- (N) **Monteringsinstruksjon**
- (S) **Installationsanvisning**
- (FIN) **Asennusohje**
- (I) **Istruzioni per il montaggio**
- (E) **Instrucciones de montaje**
- (P) **Instruções de montagem**
- (GR) **Οδηγίες εγκατάστασης**
- (CZ) **Návod k montáži**

- (PL) **Instrukcja montażu**
- (TR) **Montaj talimatı**
- (H) **Beépítési útmutató**
- (HR) **Upute o ugradnji**
- (BUL) **Инструкция за монтаж**
- (RO) **Instrucţiuni de montaj**
- (RU) **Инструкция по монтажу и установке**
- (LT) **Montavimo informacija**
- (LV) **Iemontēšanas pamācība**
- (EST) **Paigaldusjuhend**
- (SLO) **Navodilo za vgradnjo**
- (SK) **Montážny návod**

# ERICH

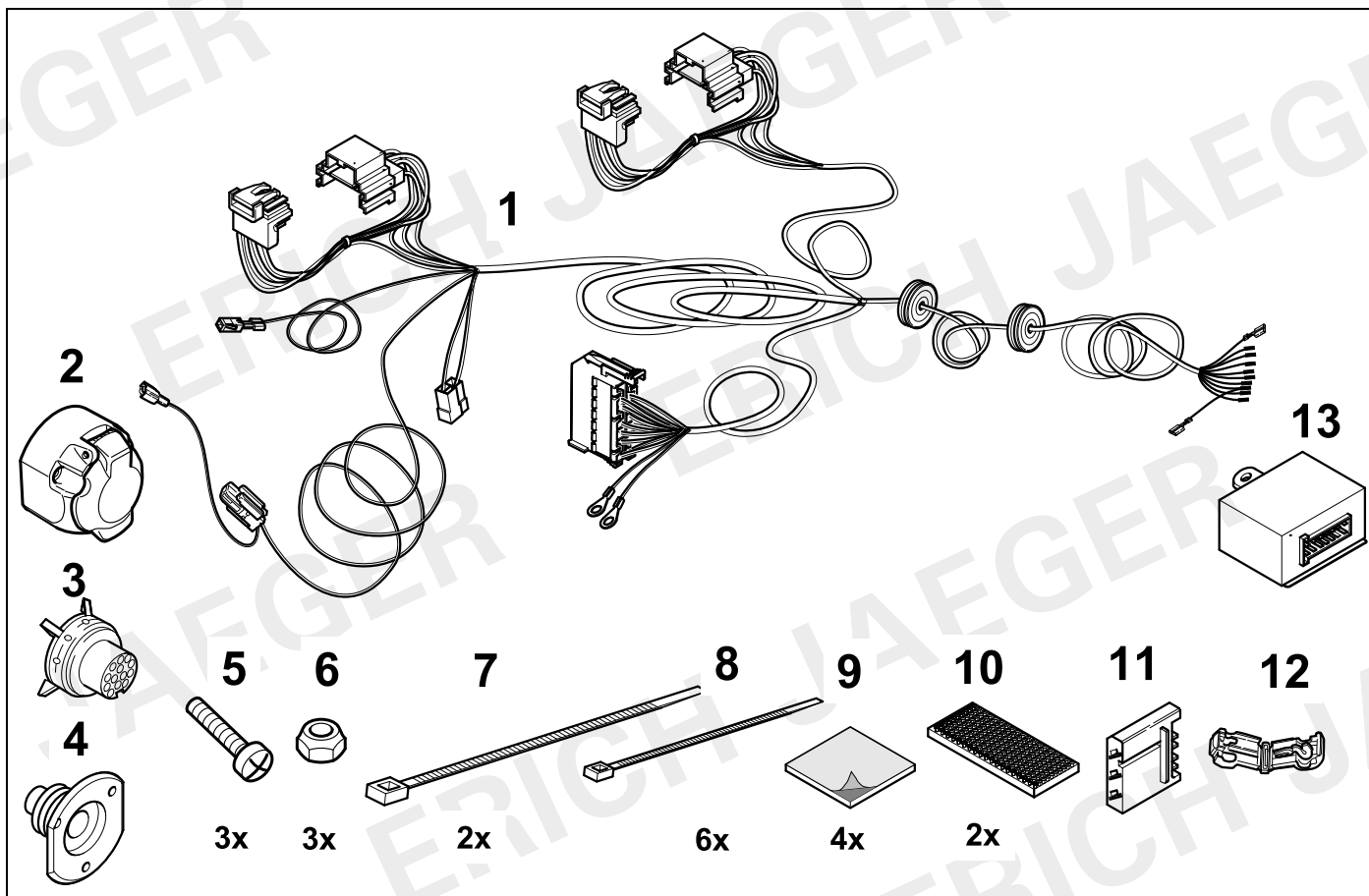
**KIT**

**736895**

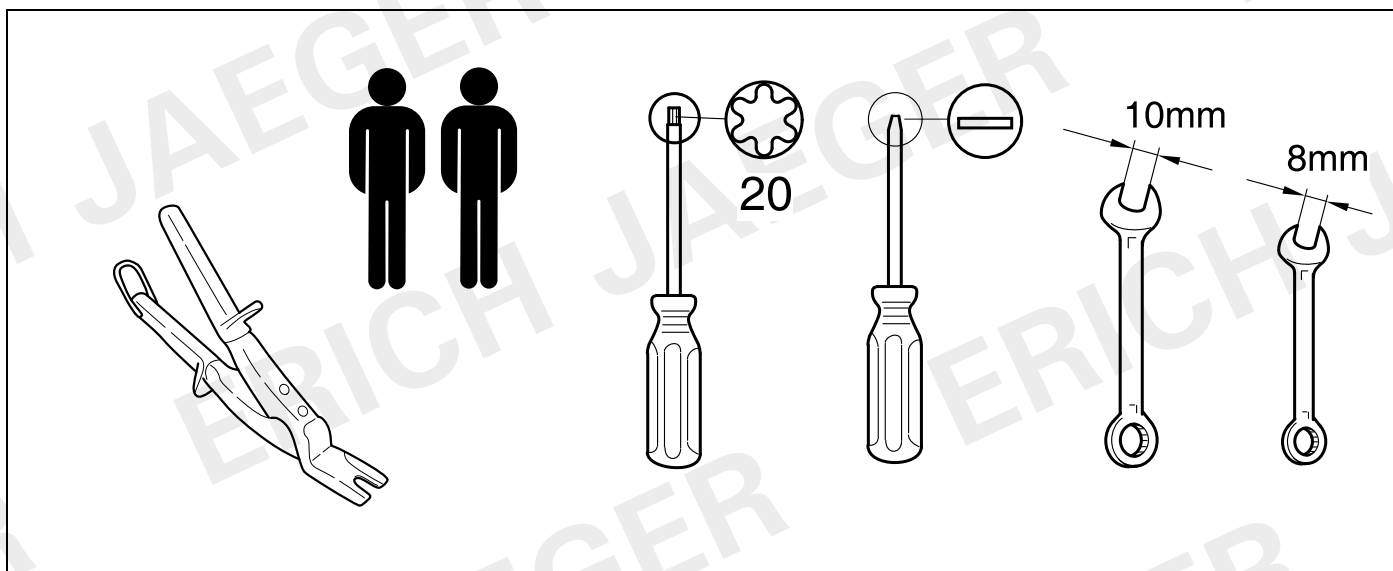


**KIT**

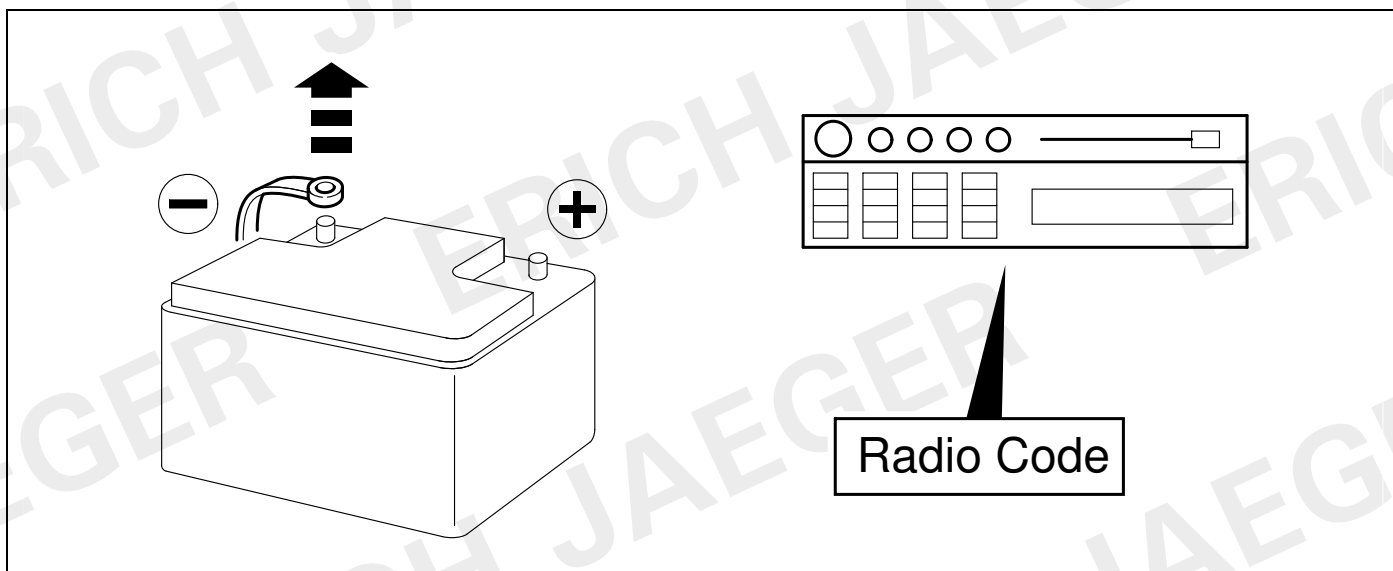
**748995**



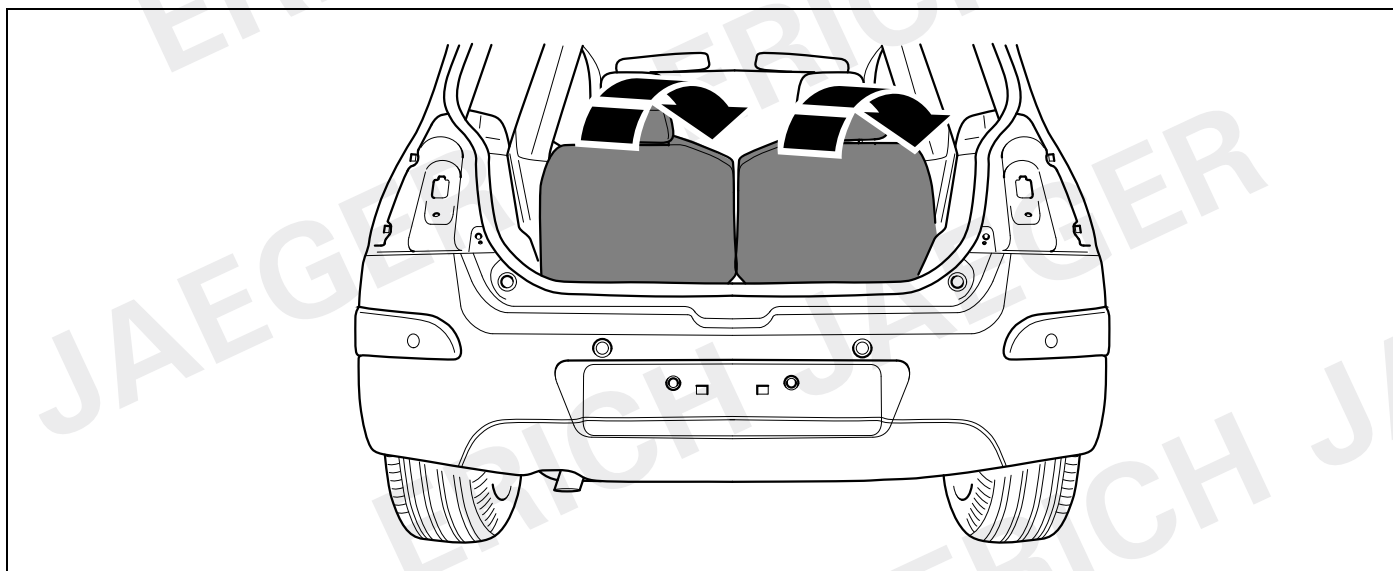
## TOOL



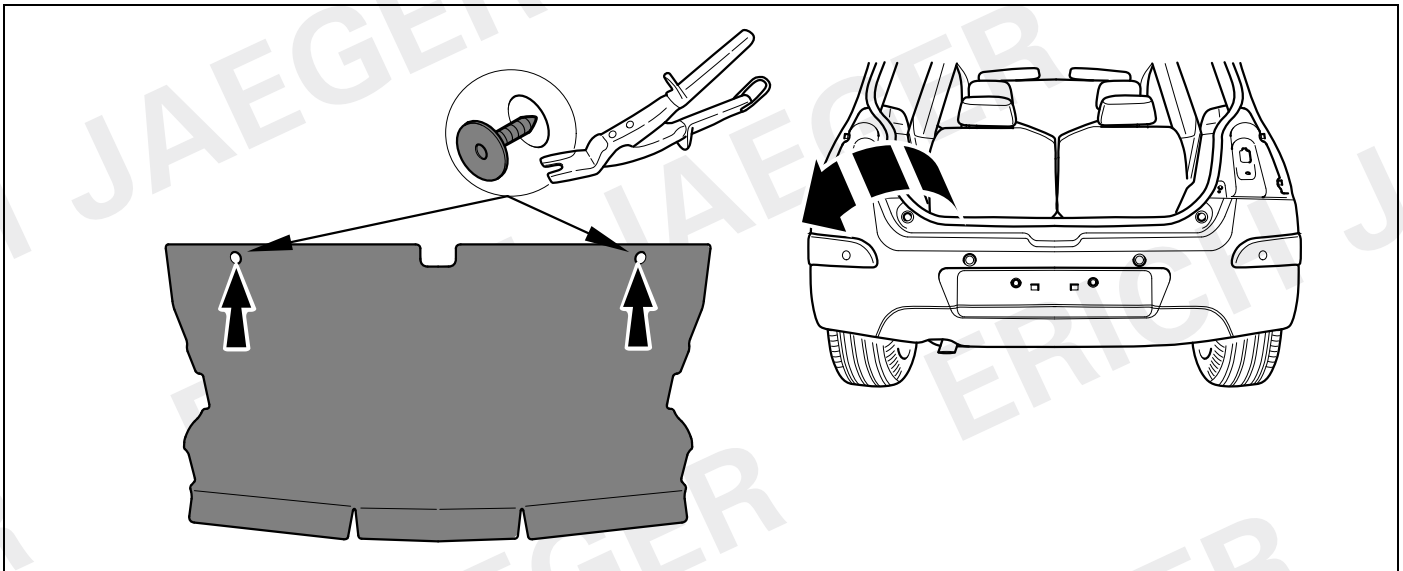
1



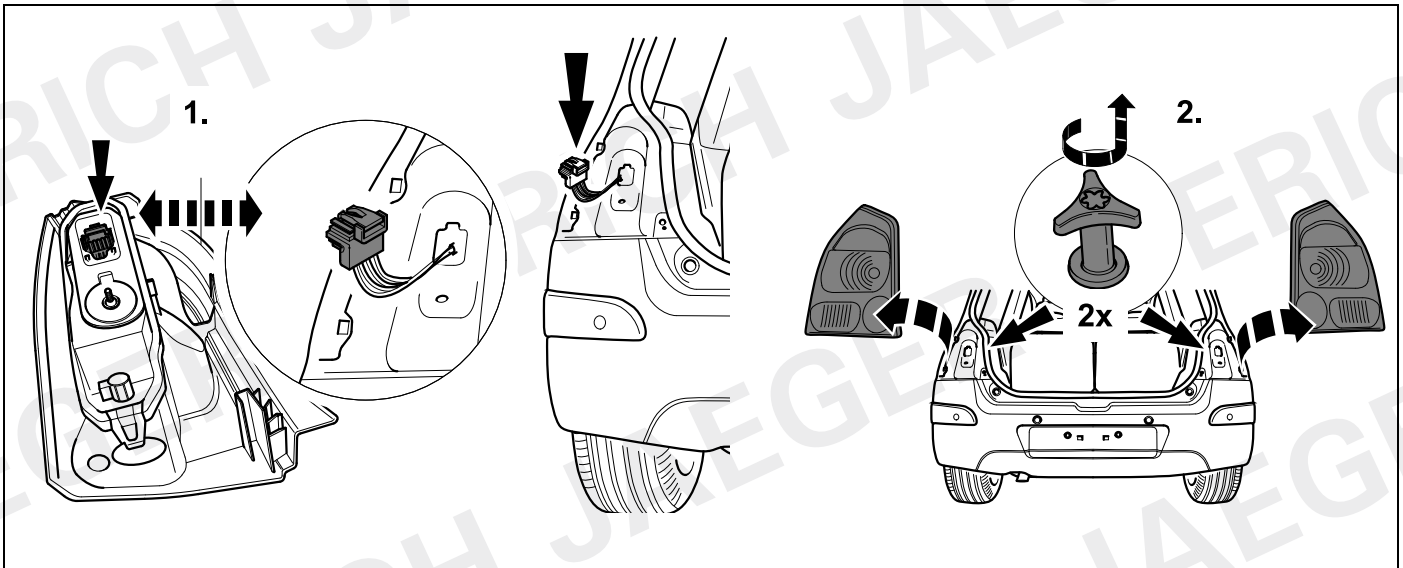
2



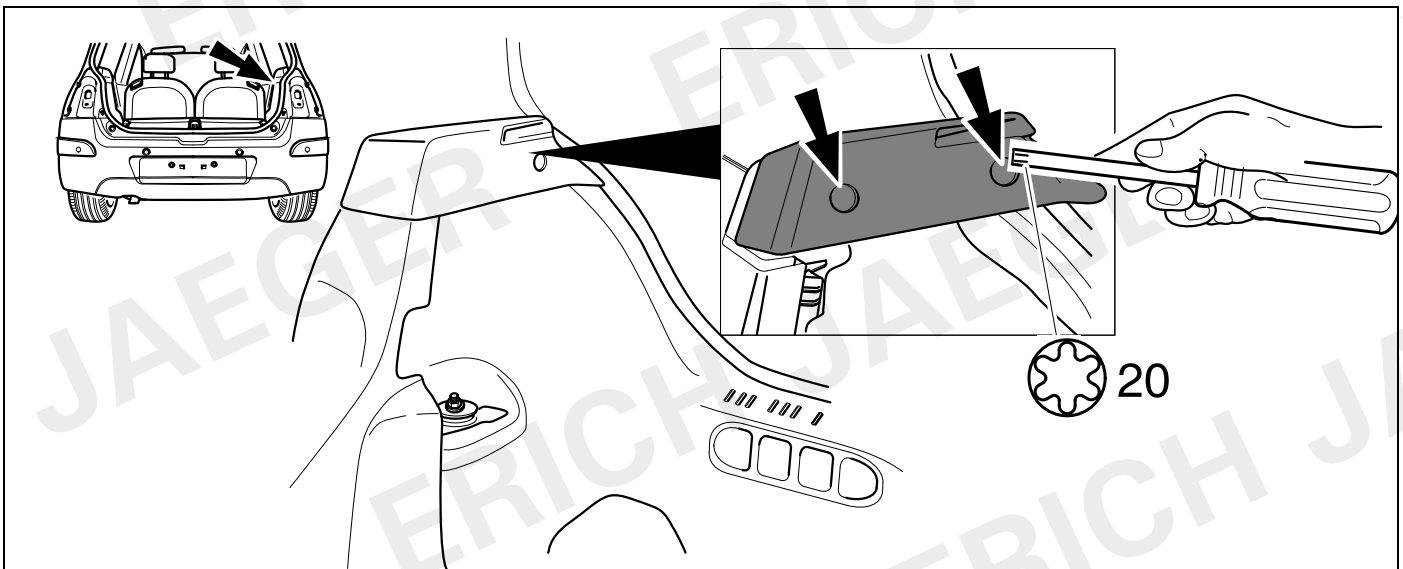
3



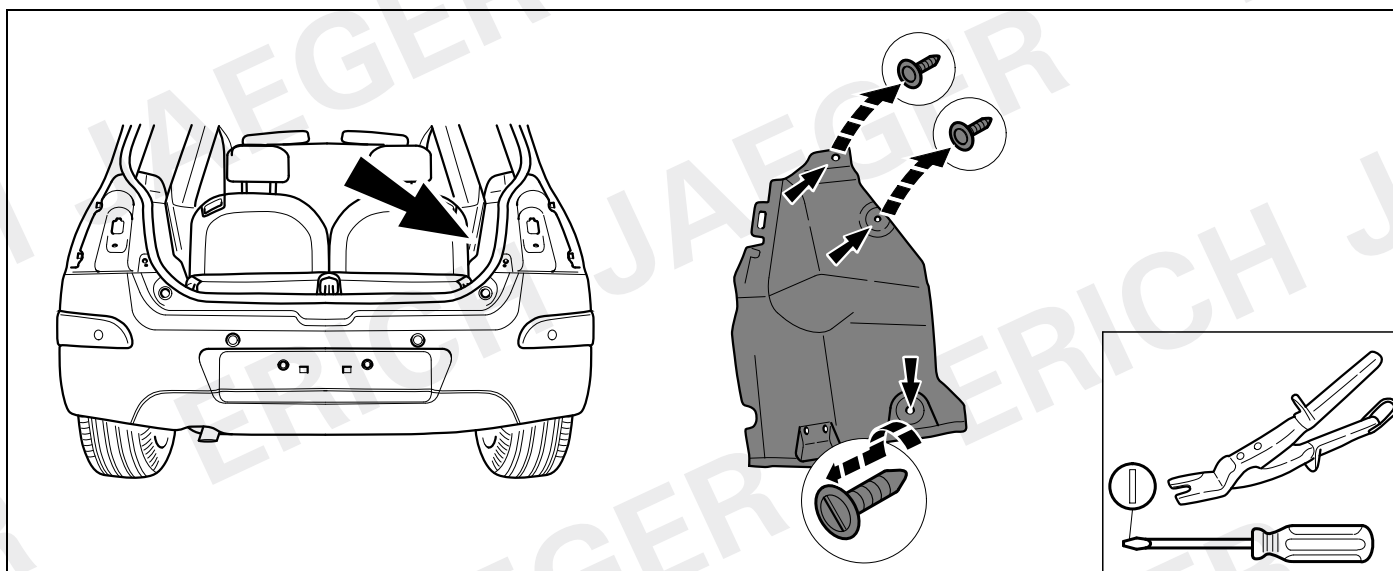
4



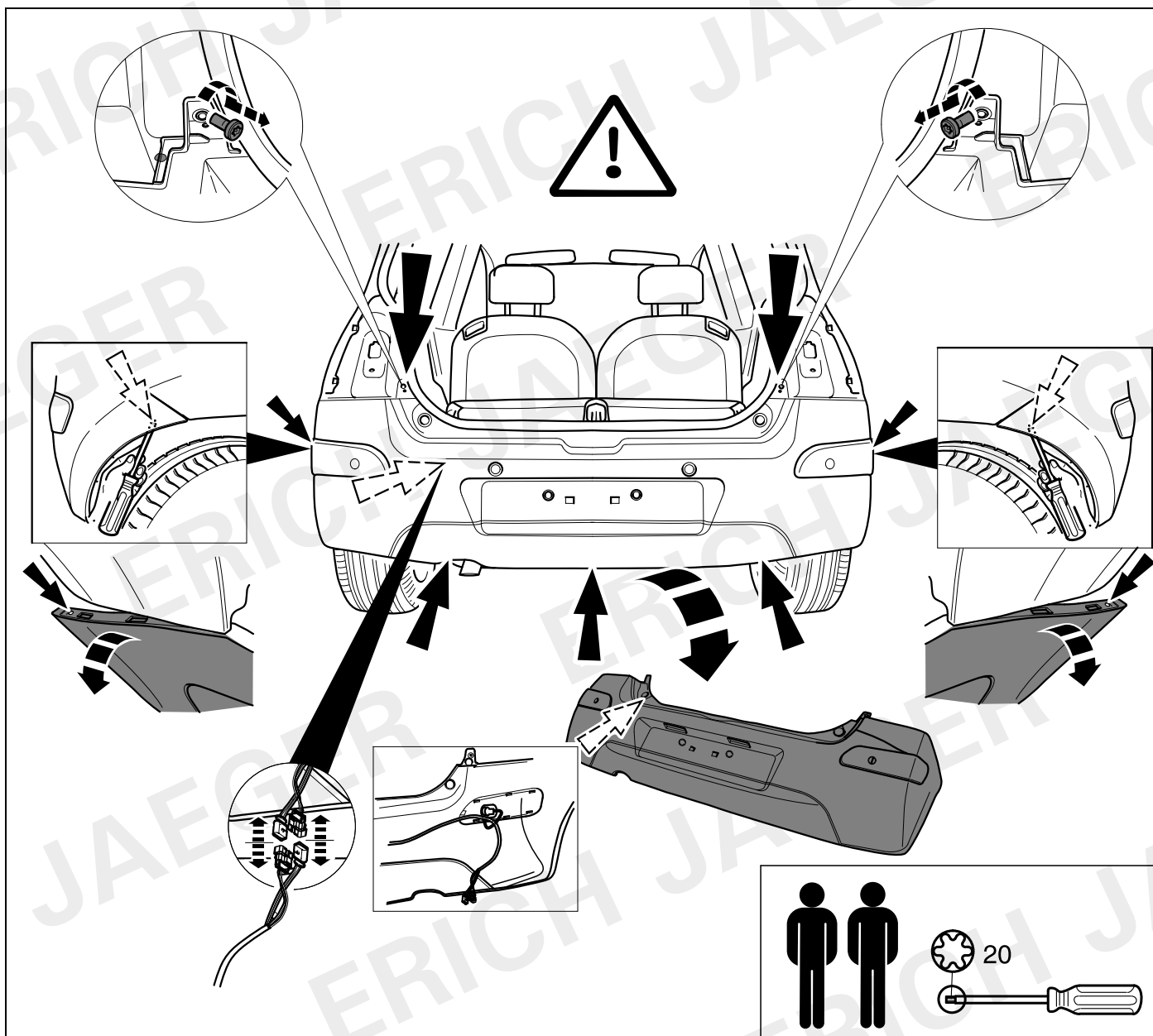
5



6

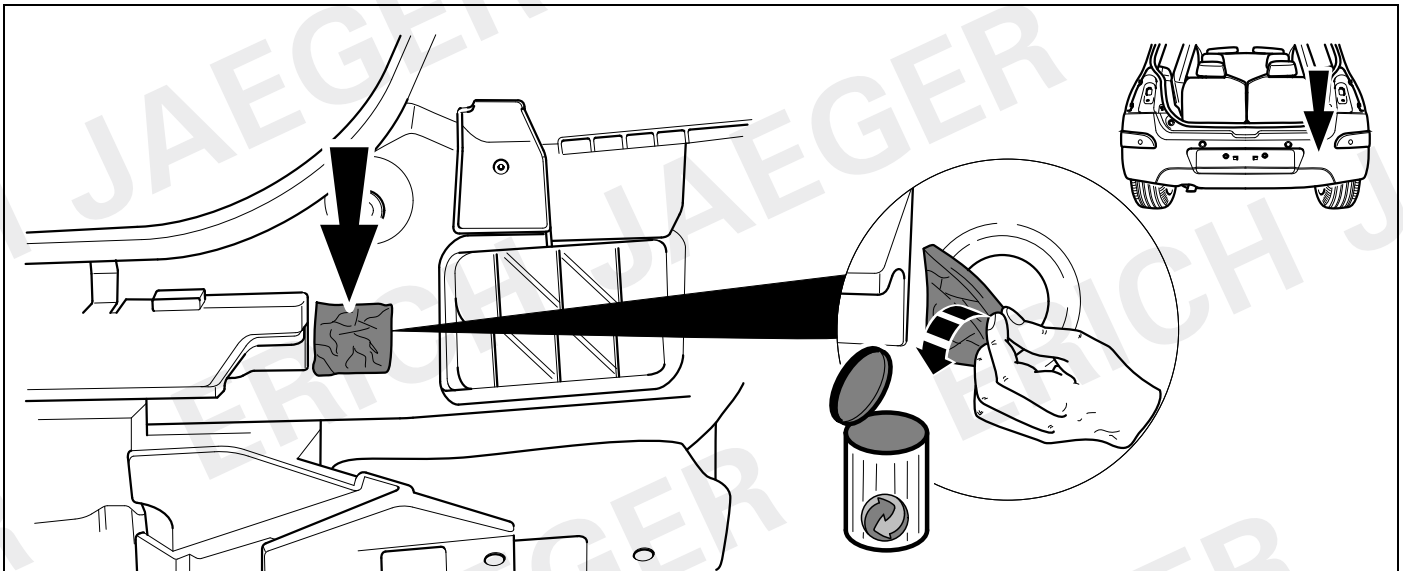


7

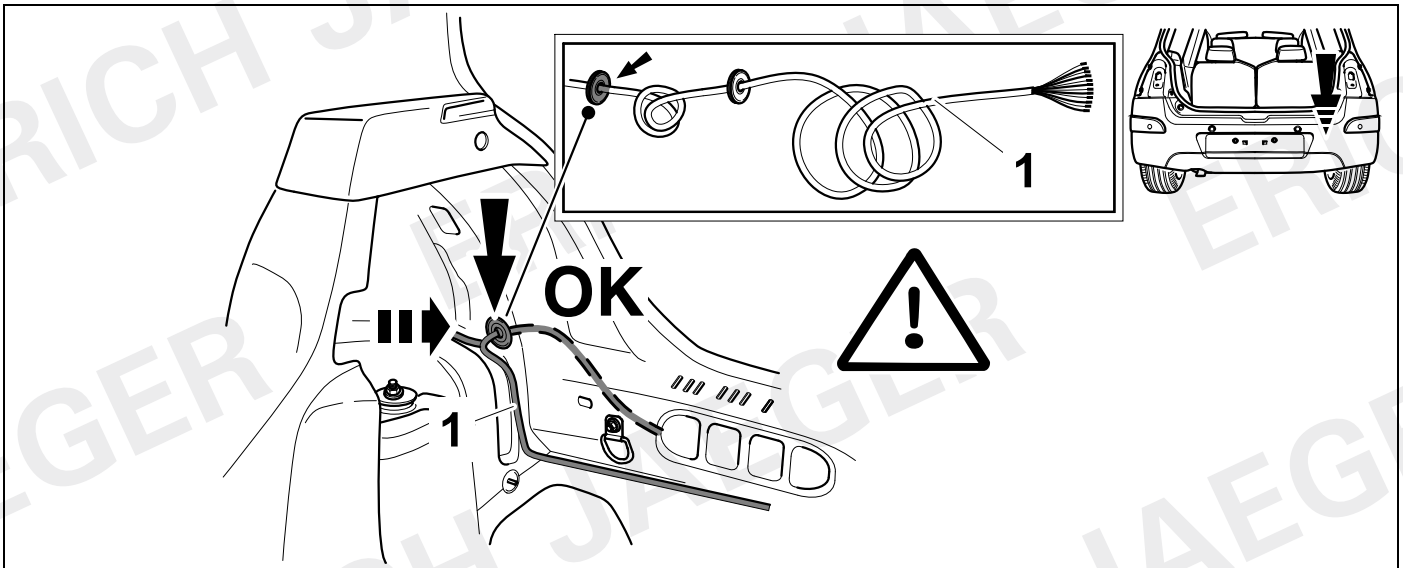




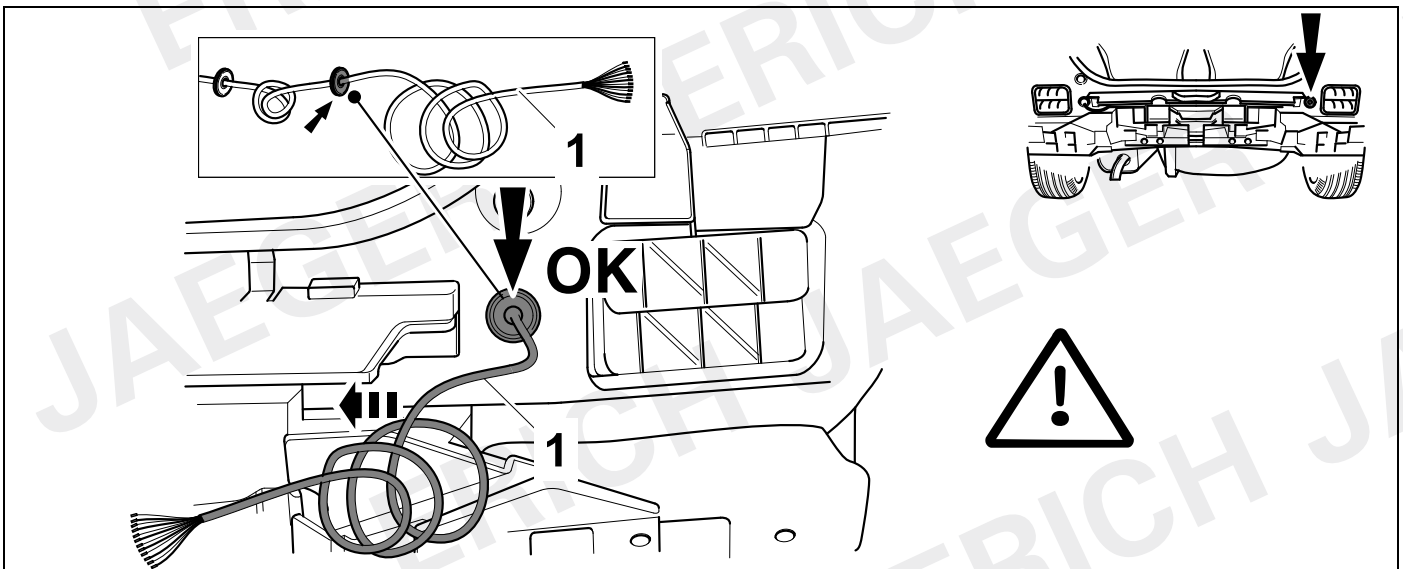
8



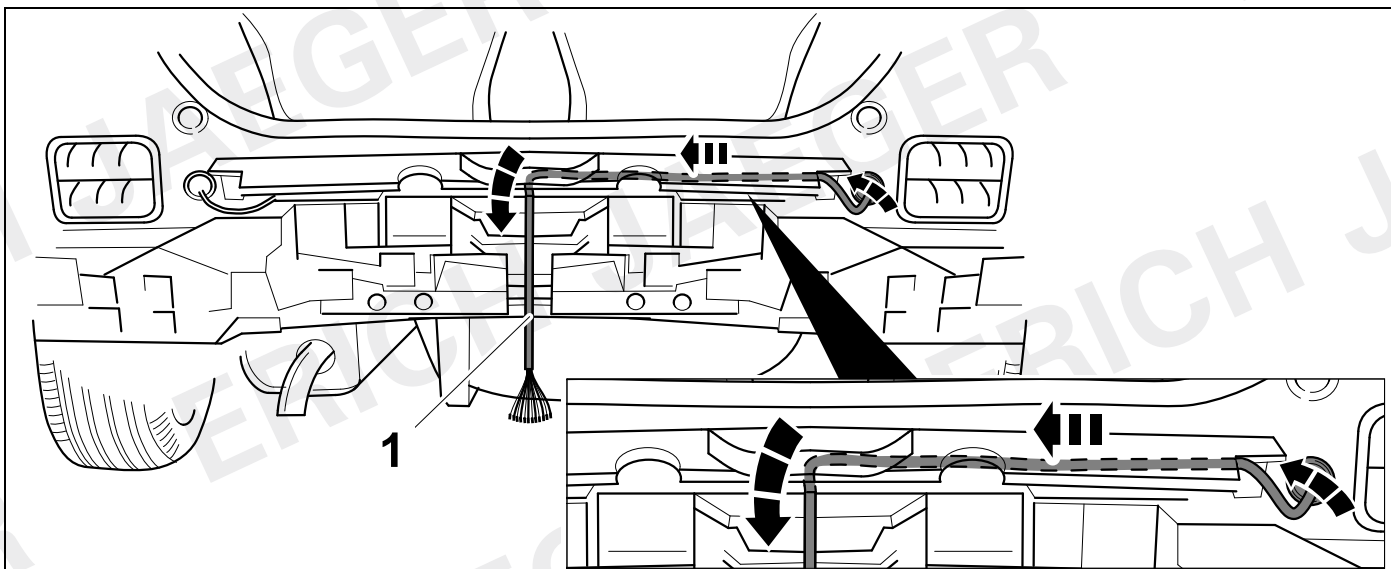
9



10



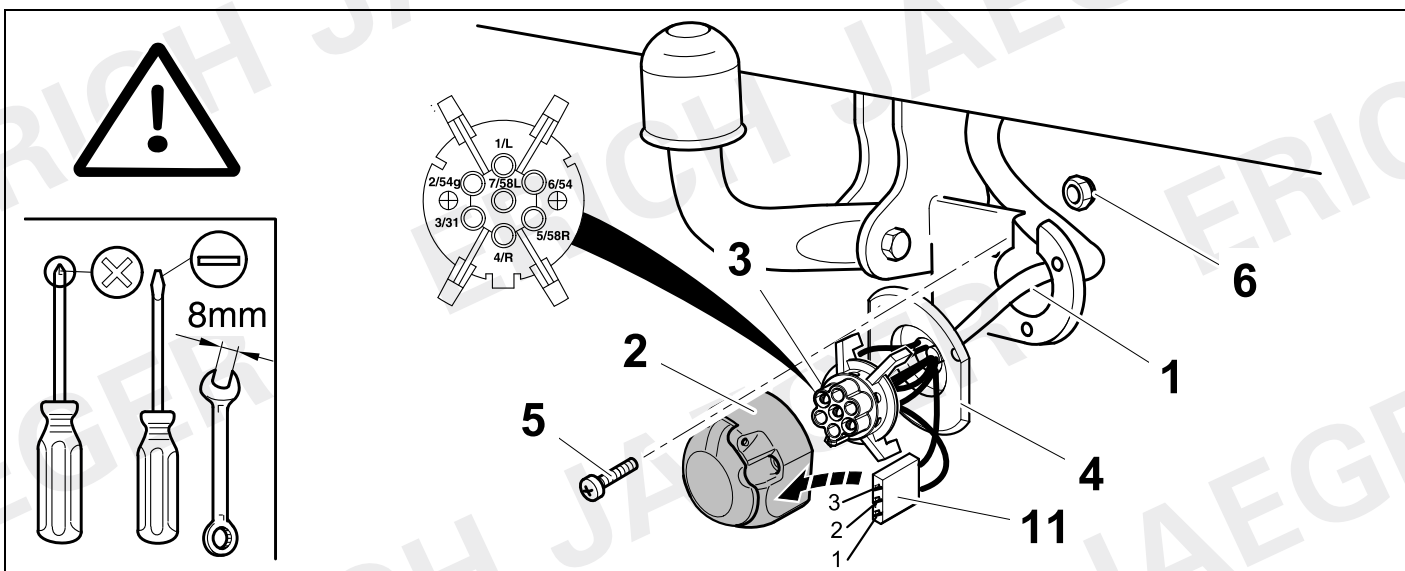
11



12

⇒ 14+15

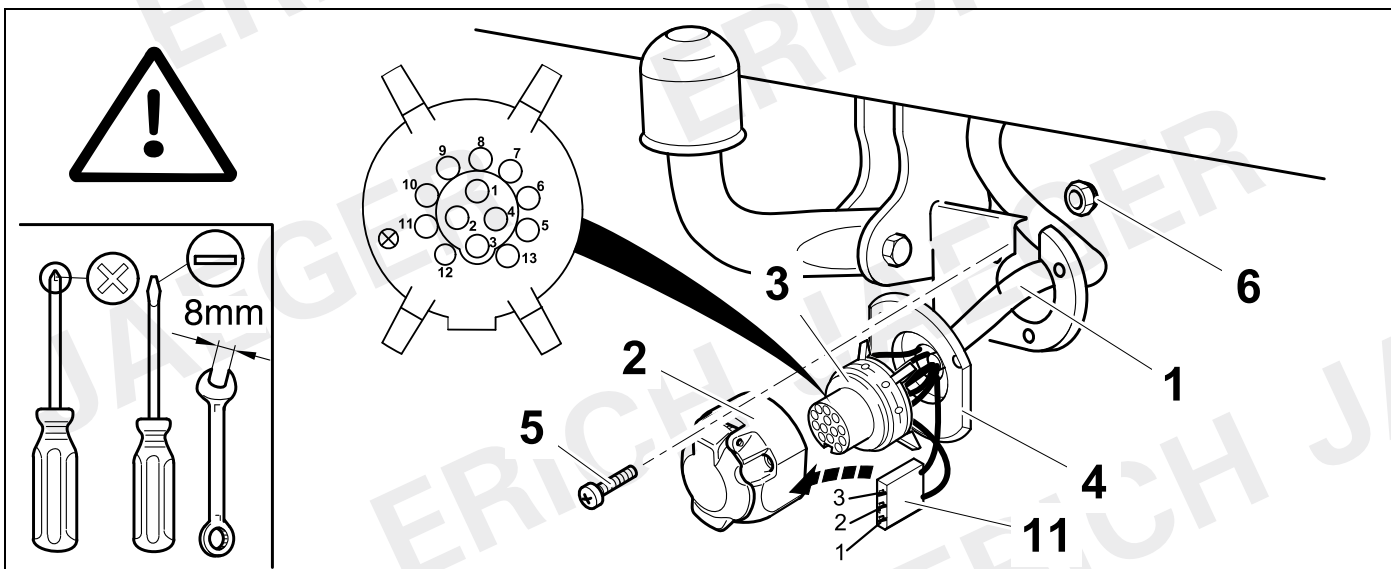
736895



13

⇒ 14+15

748995



14



16

	1	bn/bk
	2	no
	3	bn

15

7-pin + 13-pin



16

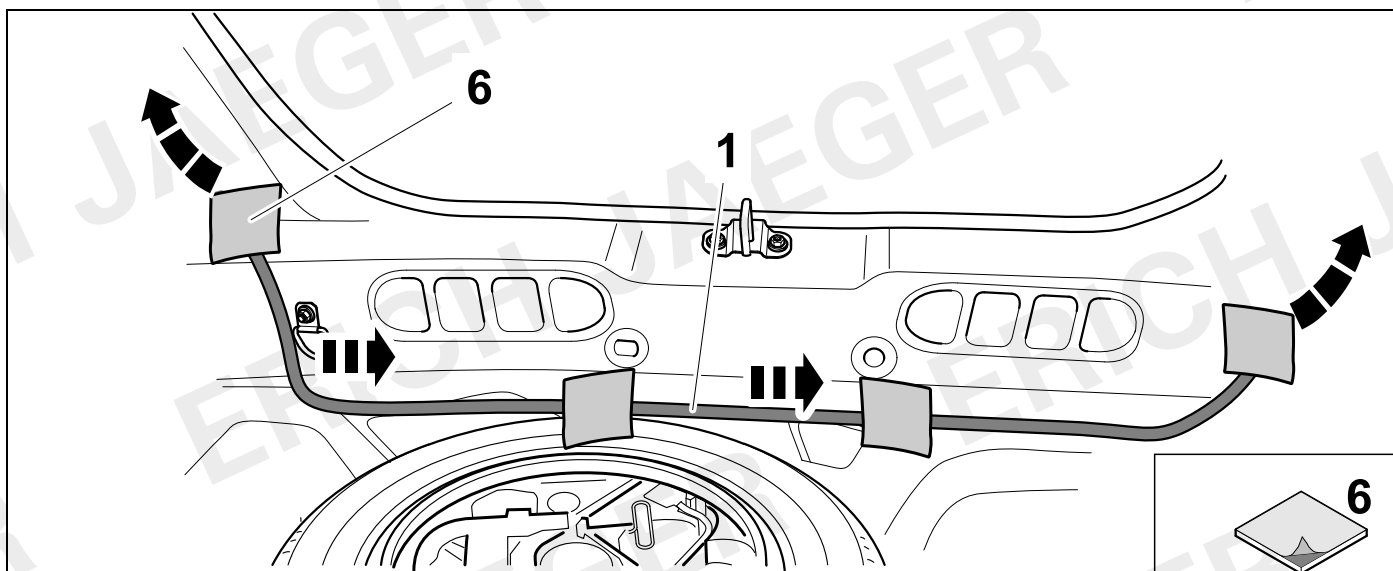
13-pin

1	wh/bk		8	bu/rd	
2	gy		9	rd	
3	wh/bn + bn		10	no	
4	bk/gn		11	no	
5	gy/rd		12	no	-/-
6	bk/rd		13	bn	
7	gy/bk				

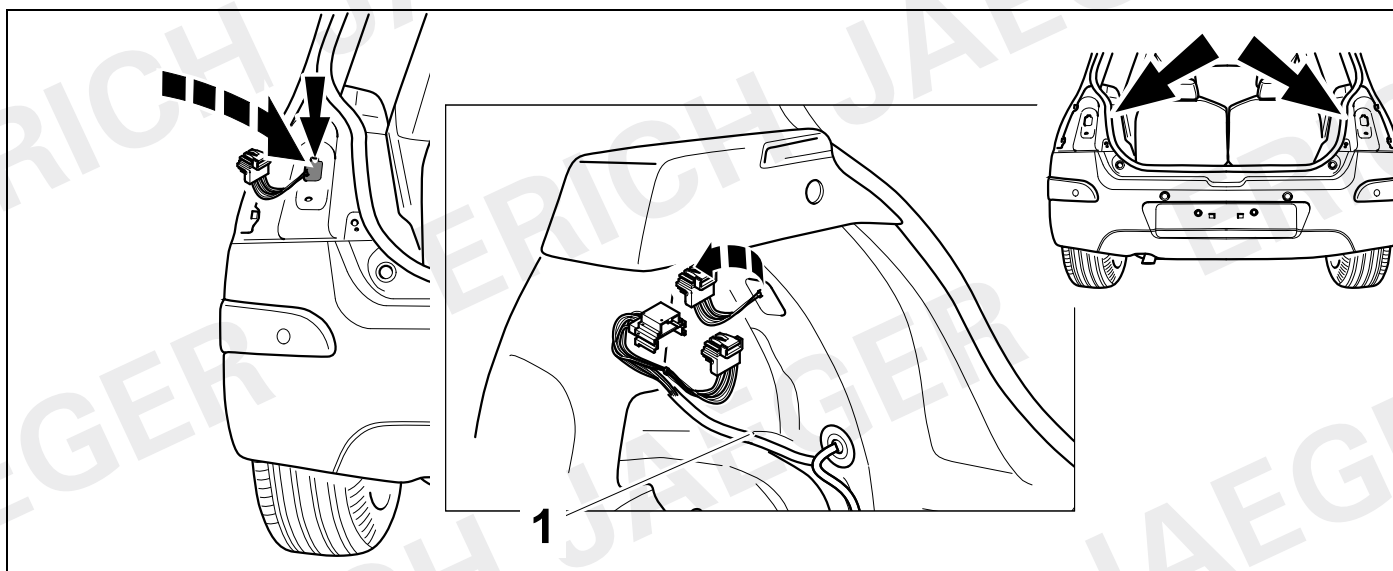




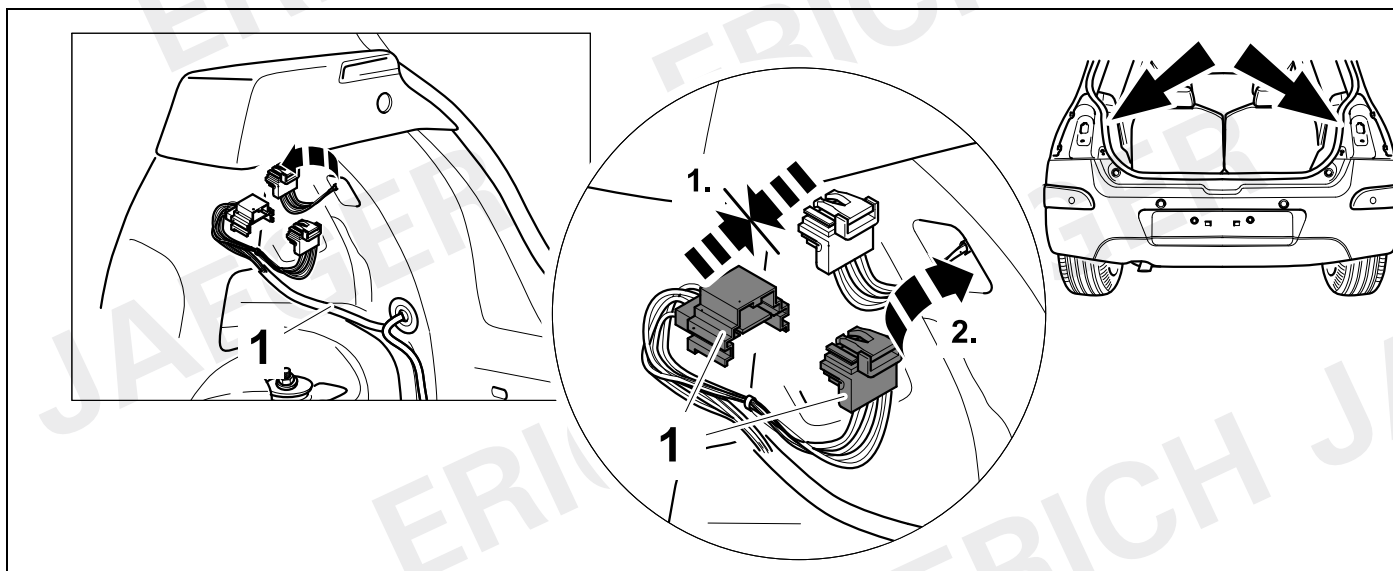
18



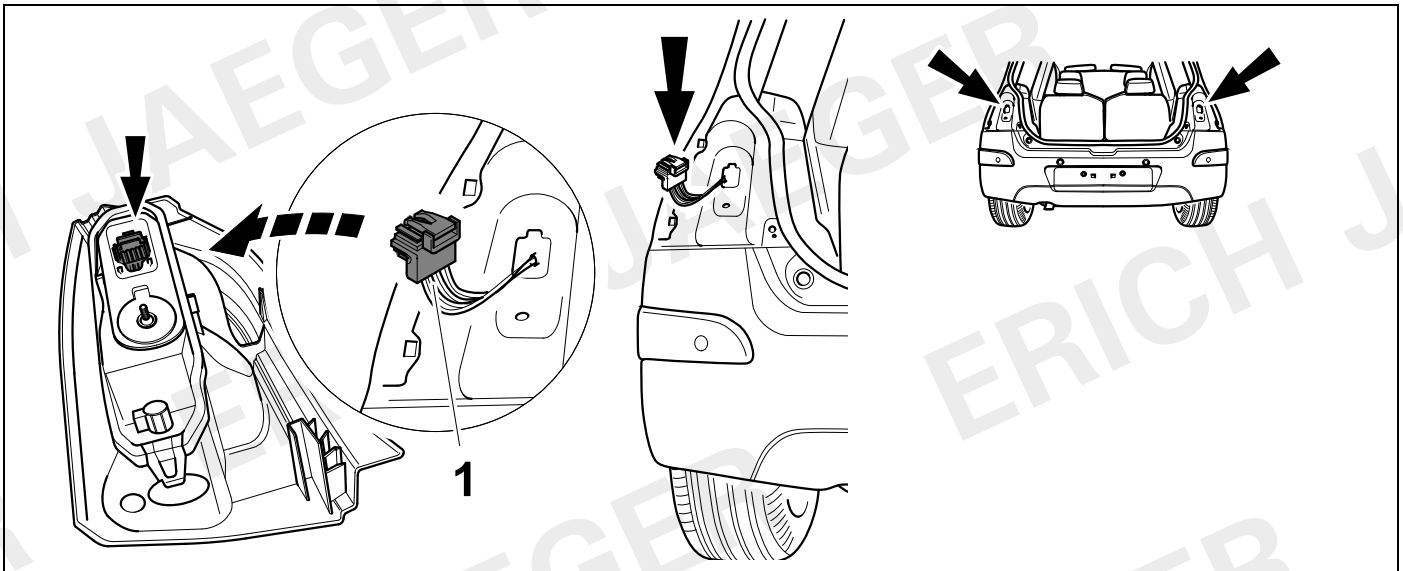
19



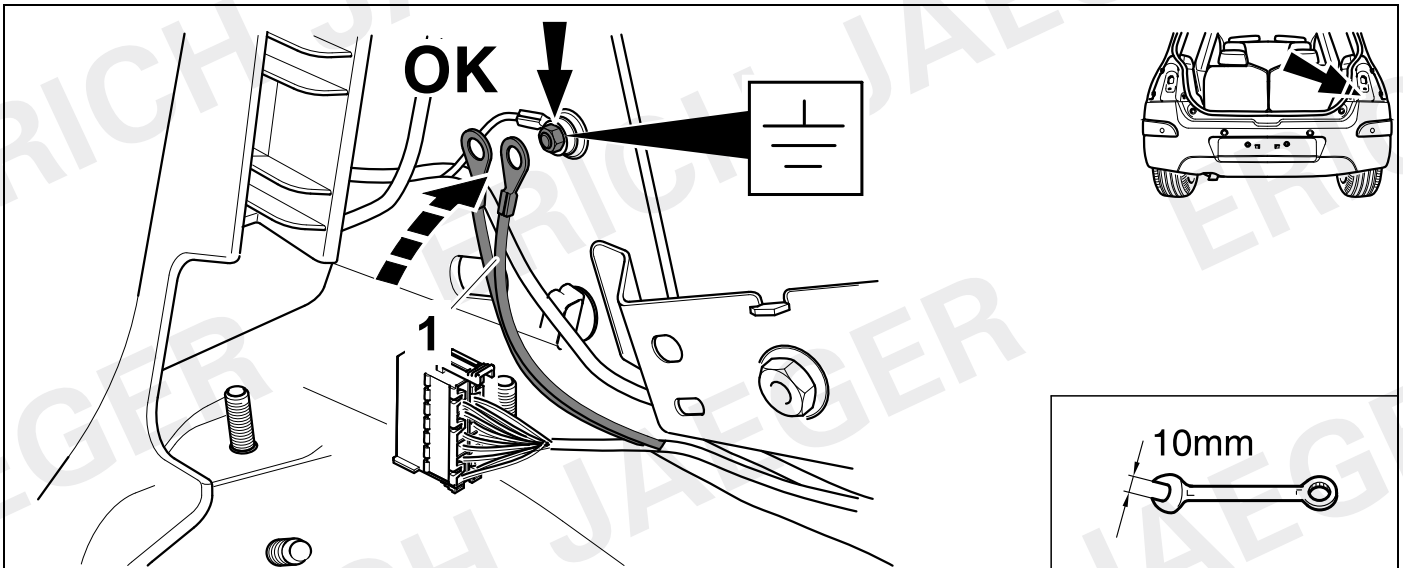
20



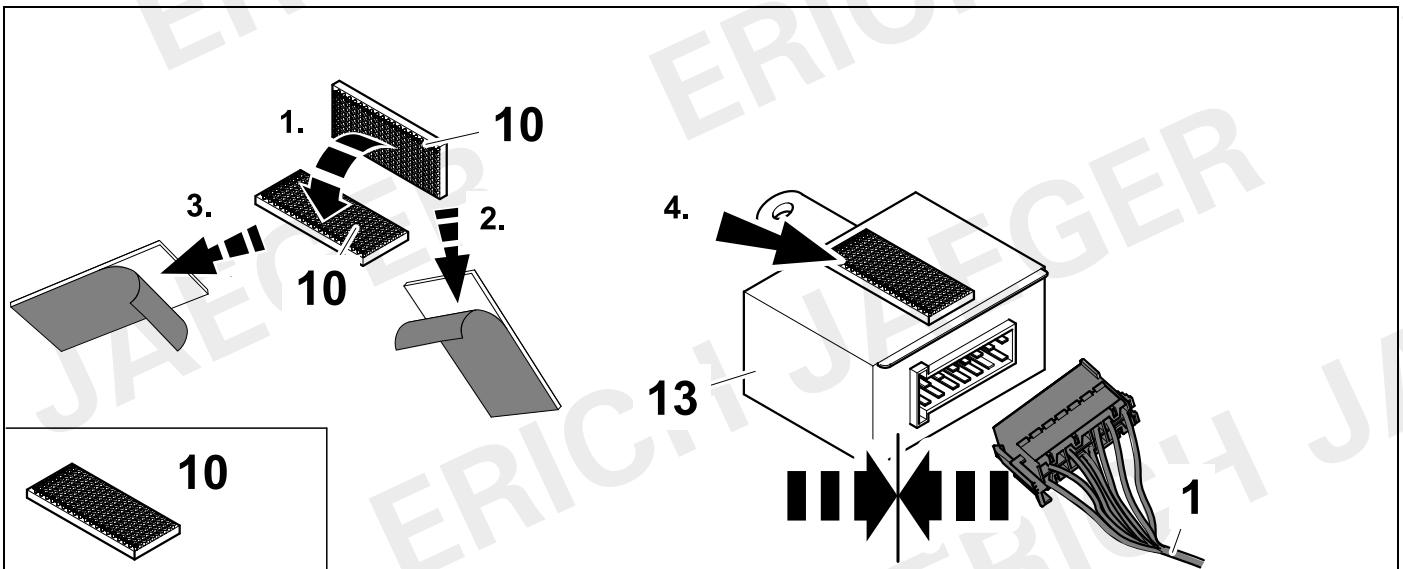
21



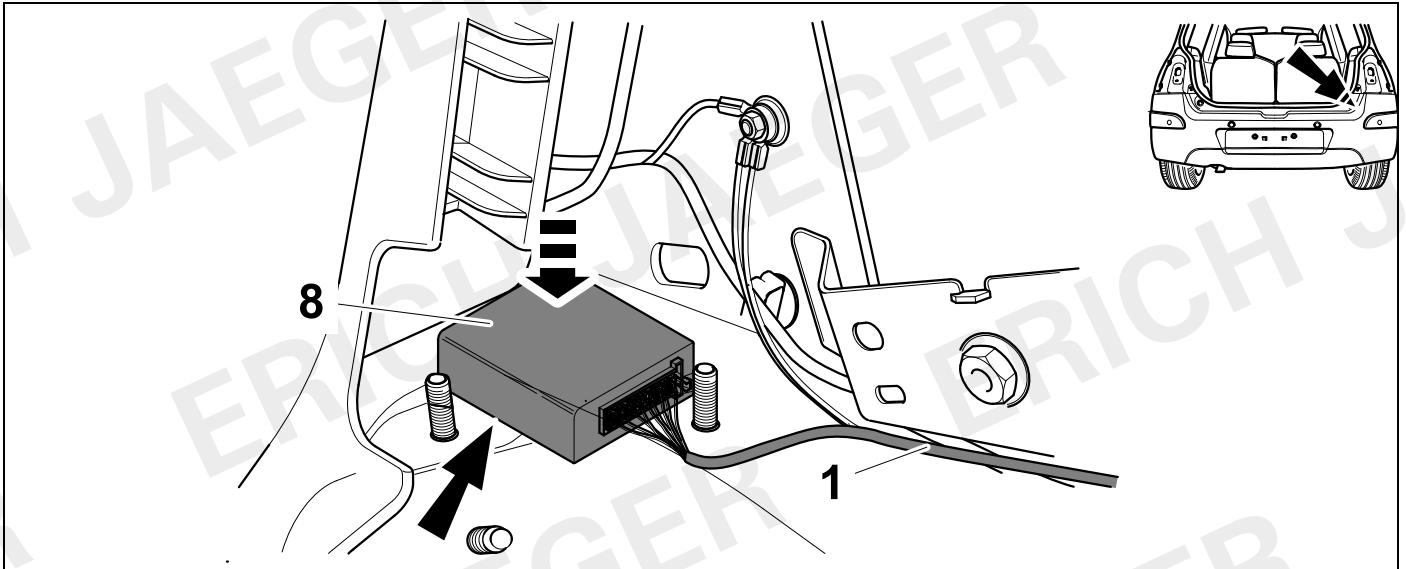
22



23

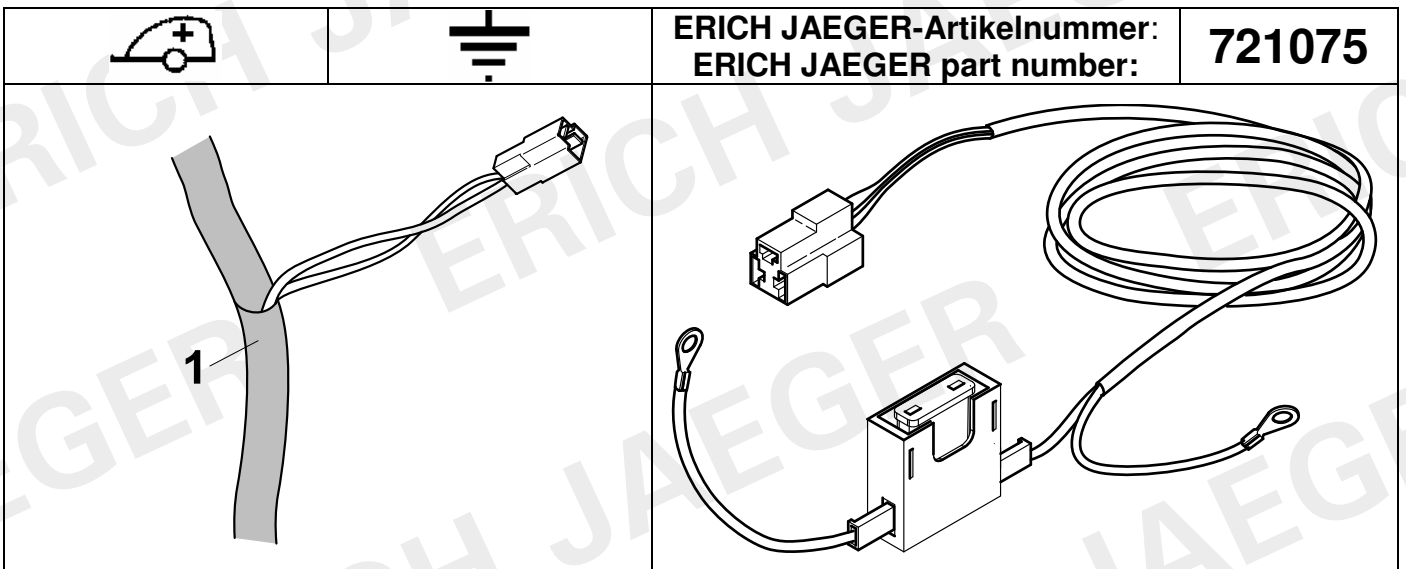


24



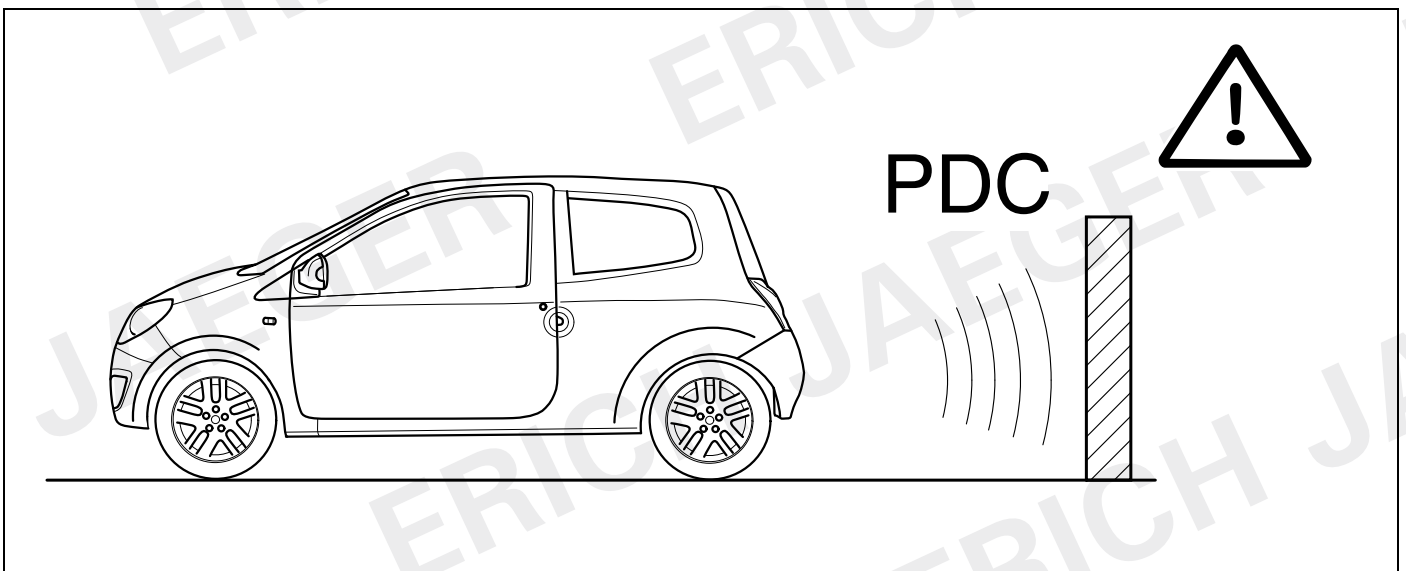
25

748995



26

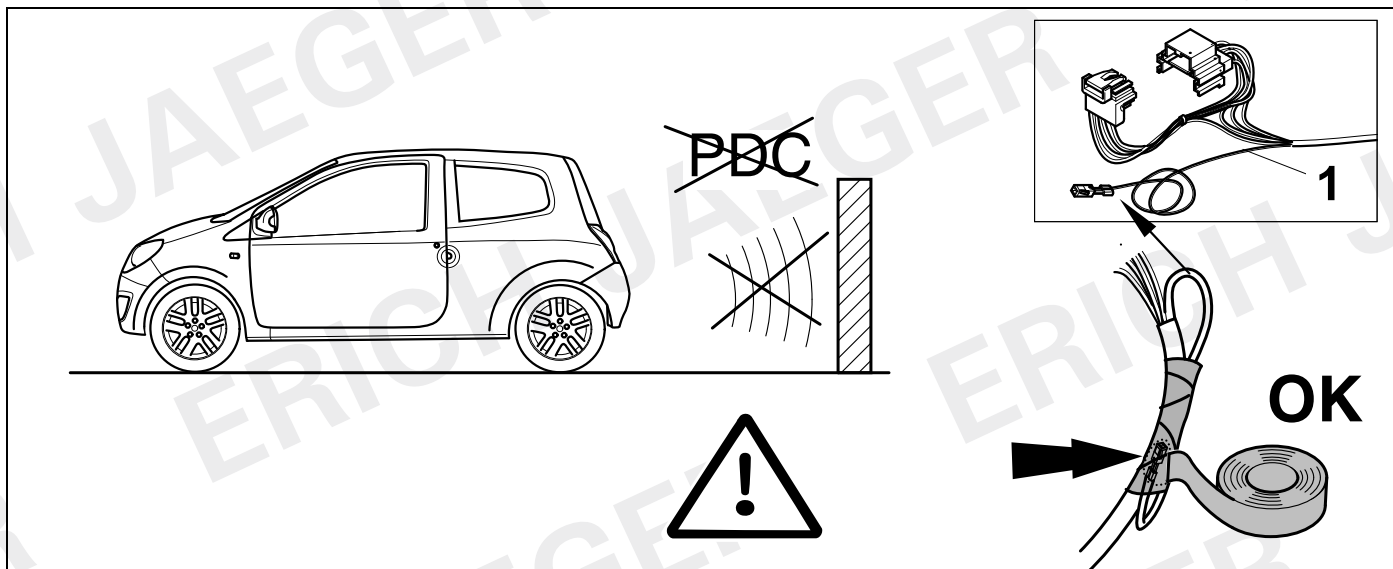
28 ⇒ 35



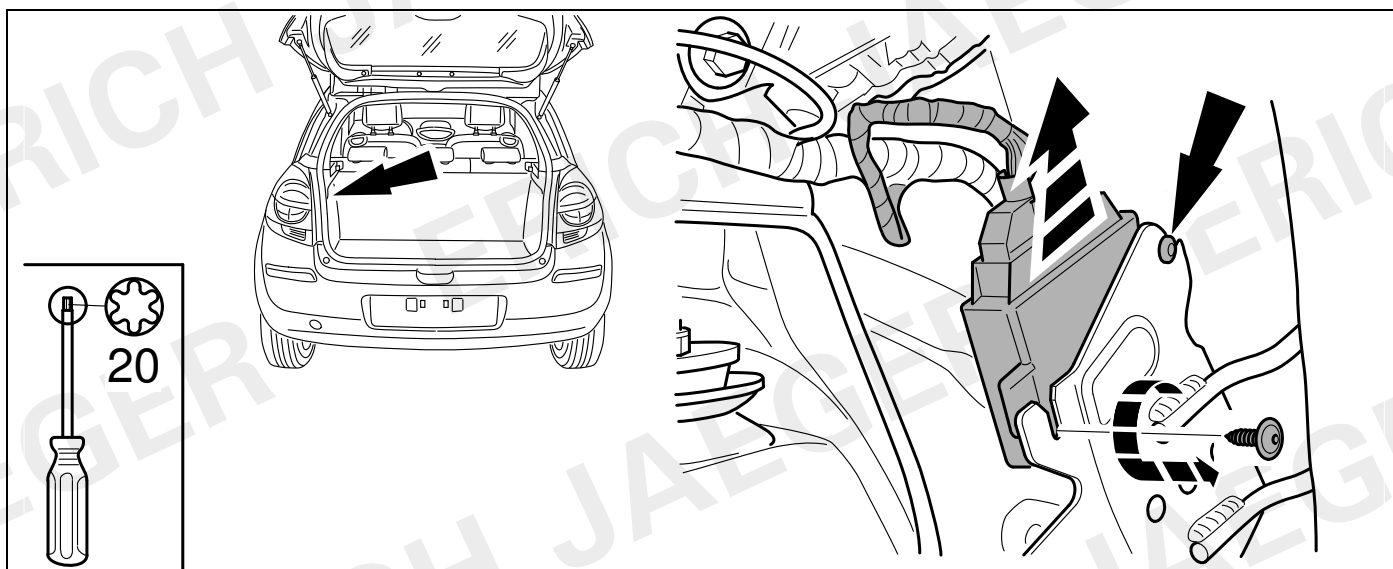
27



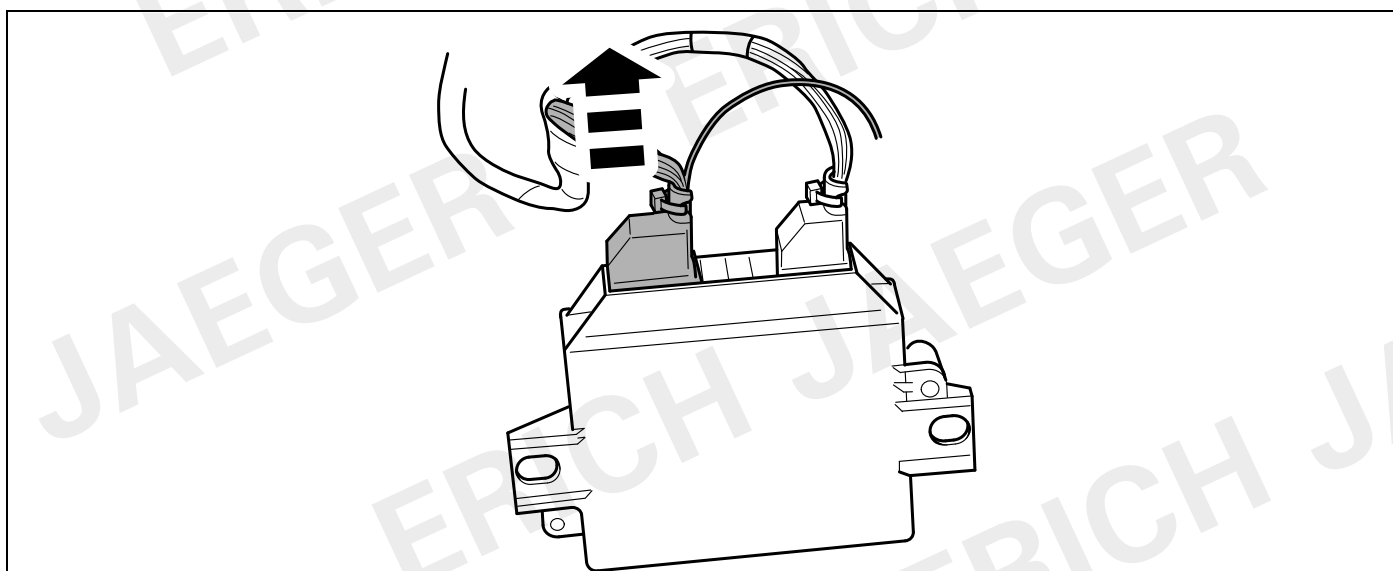
36



28

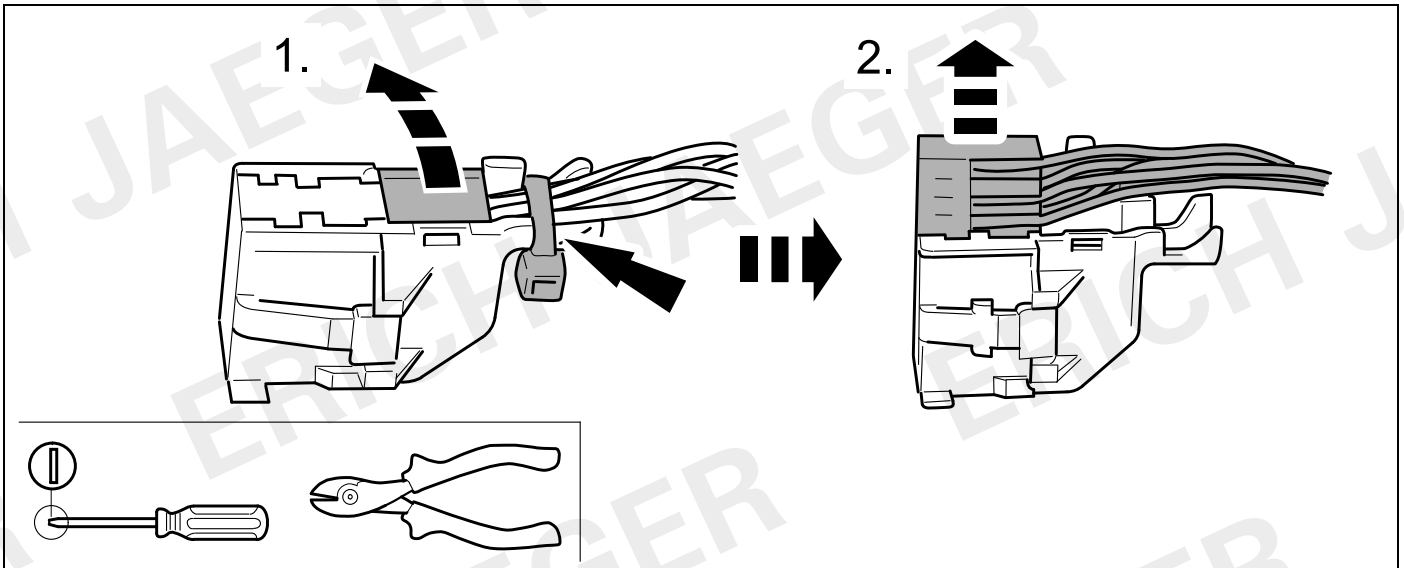


29

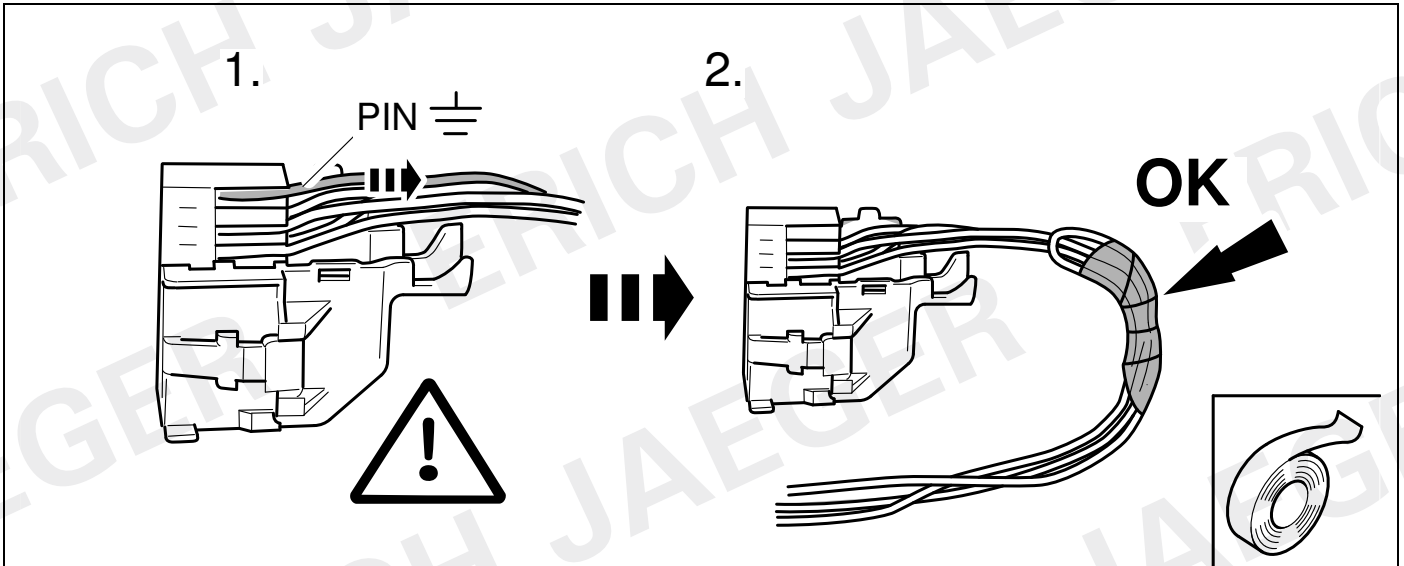




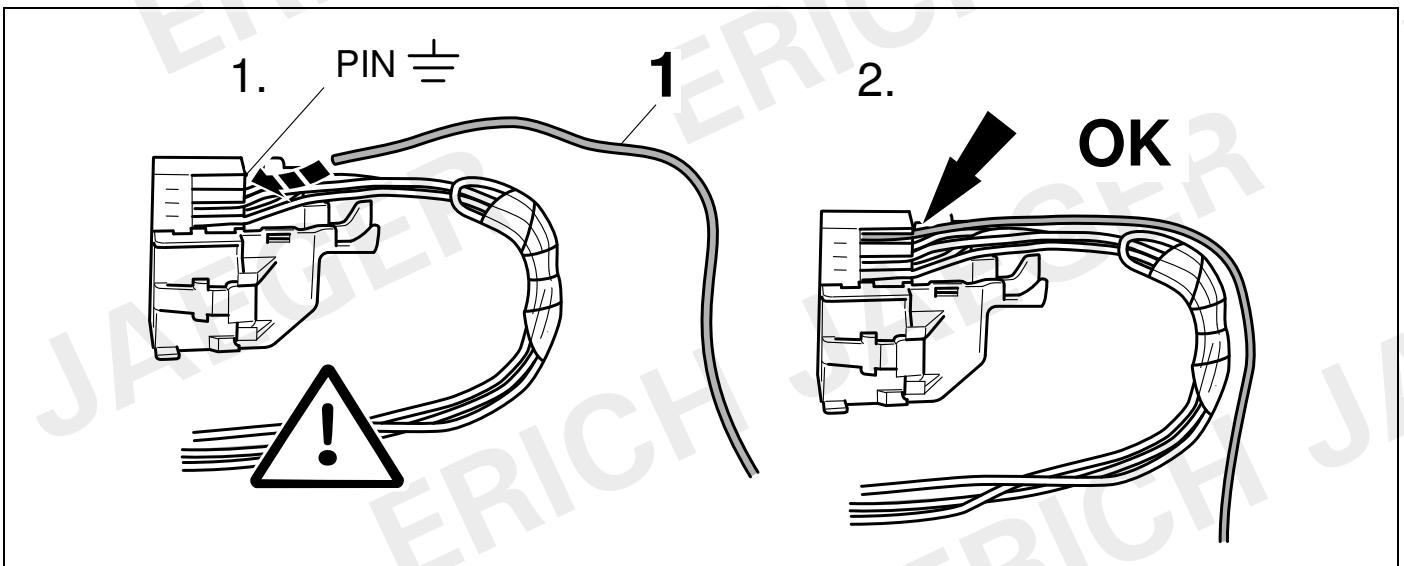
30



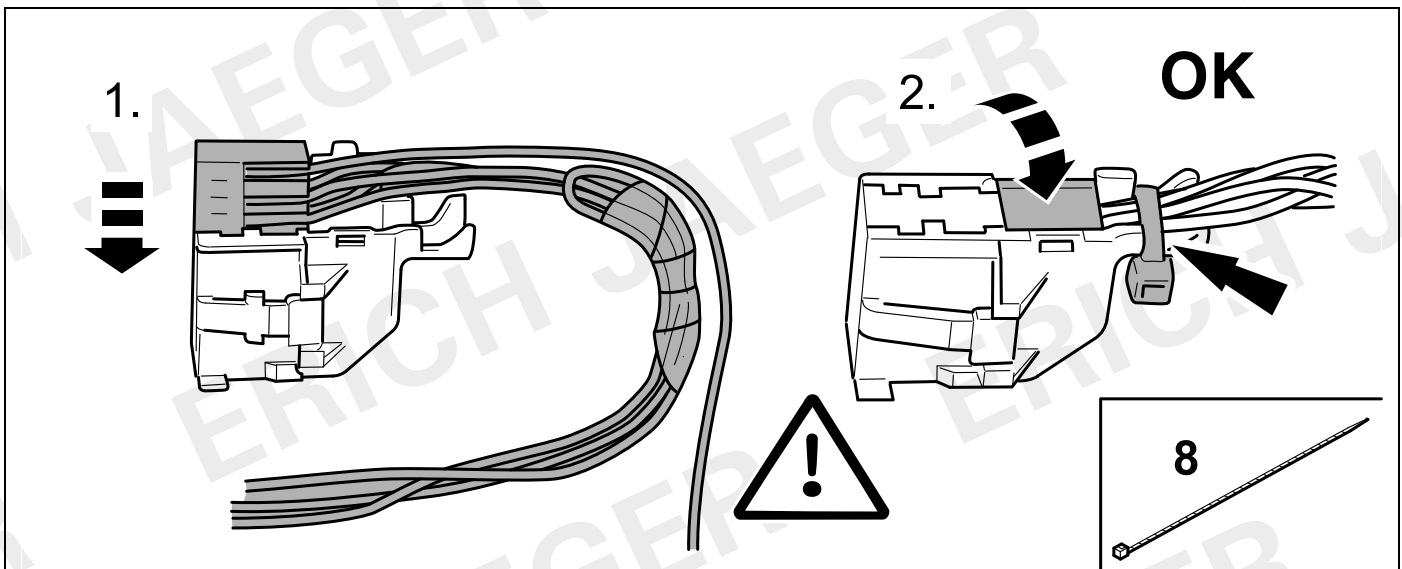
31



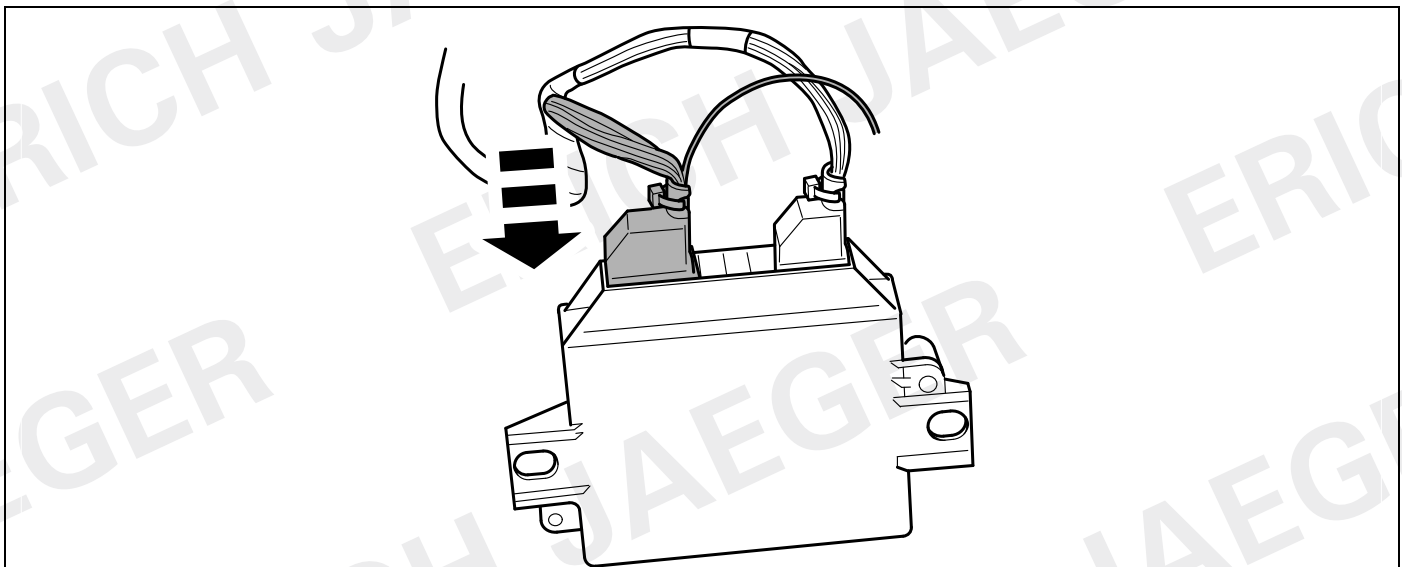
32



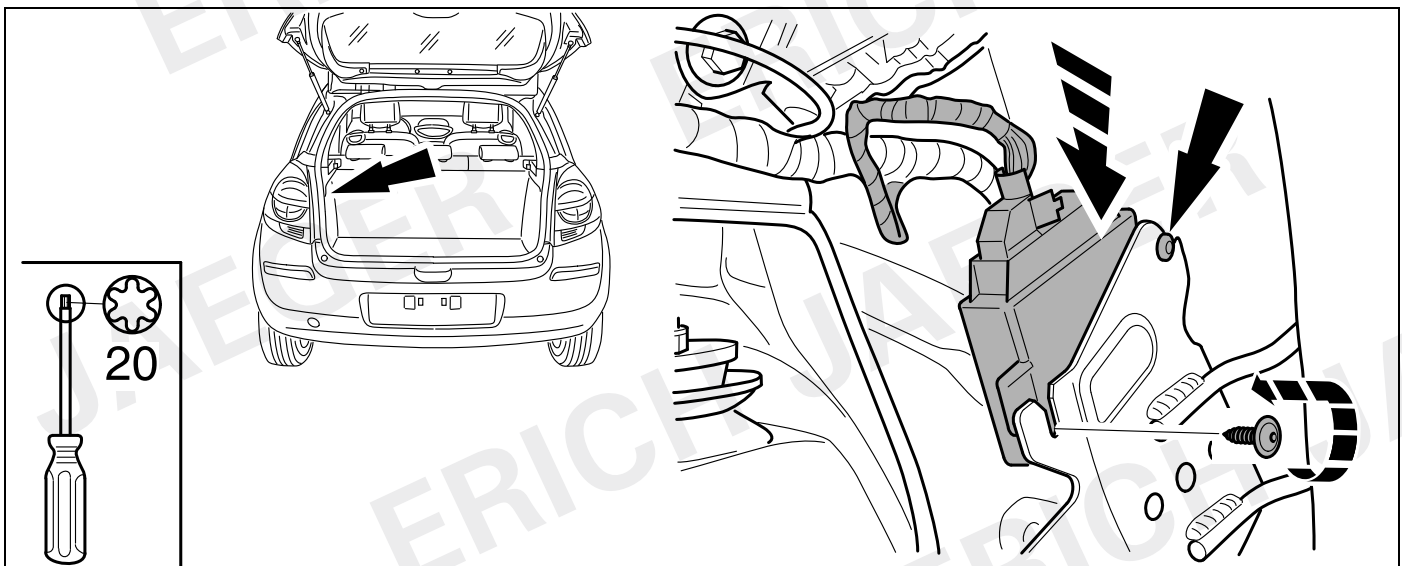
33



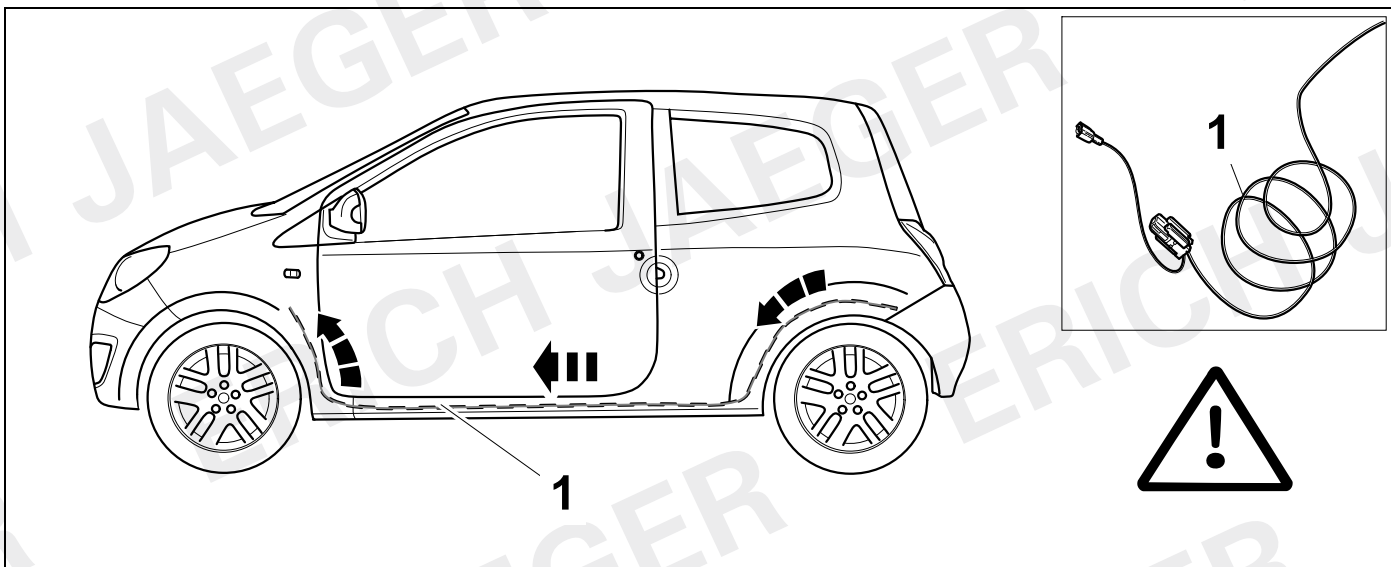
34



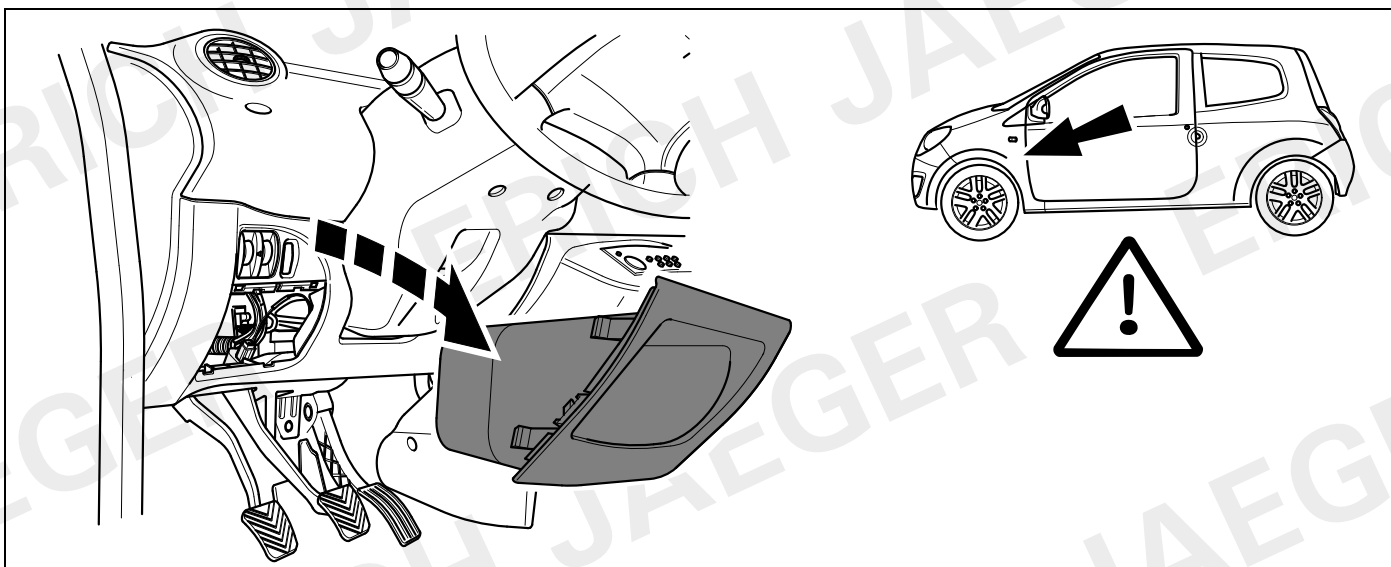
35



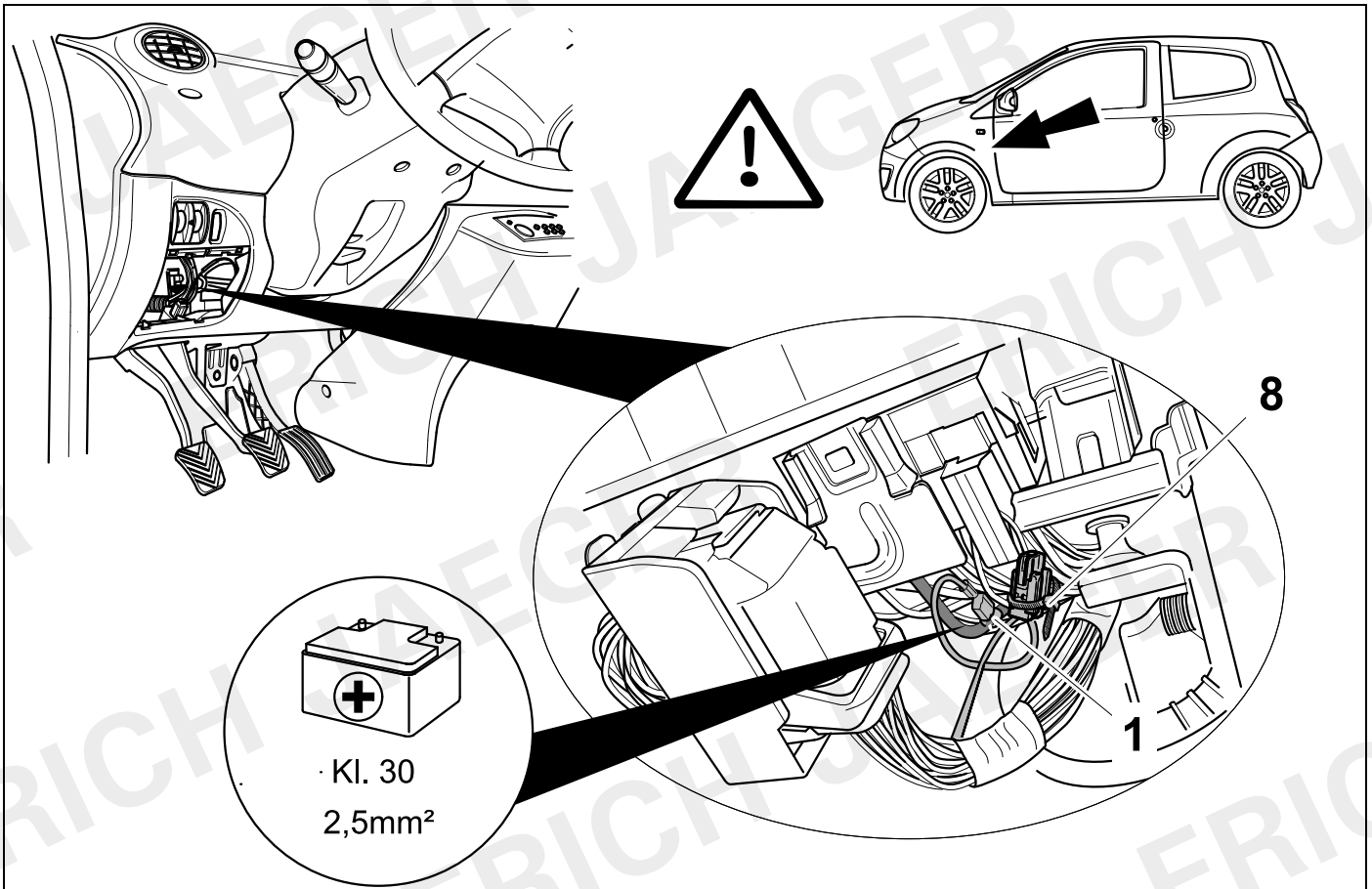
36



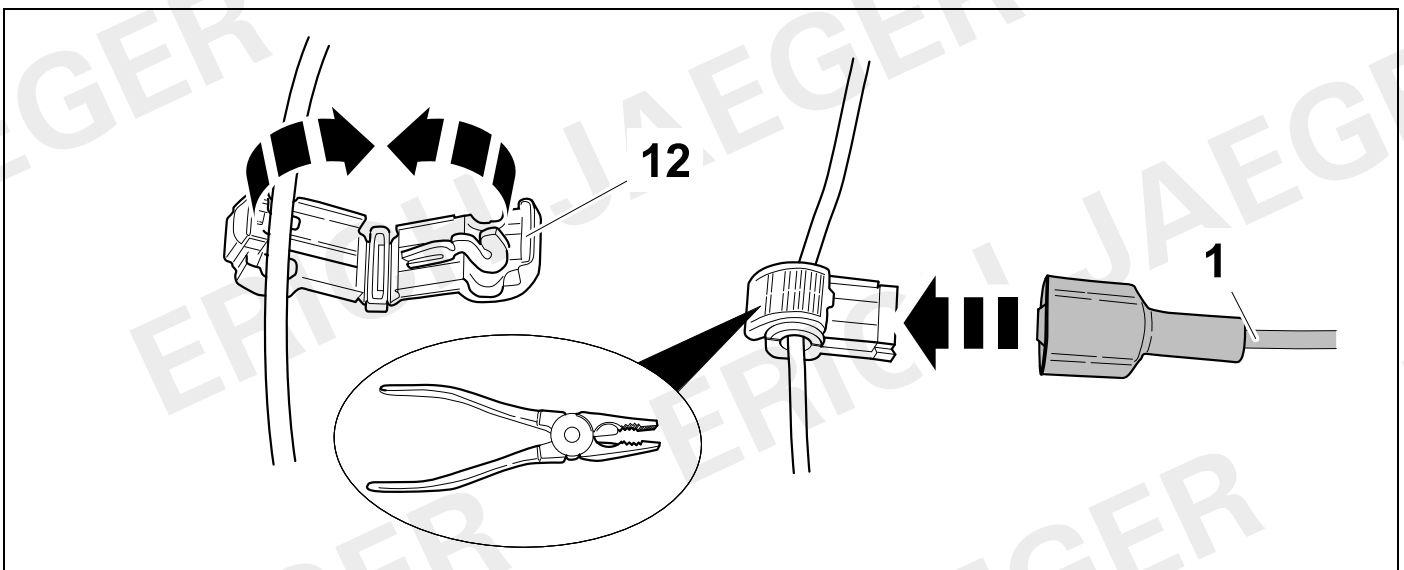
37

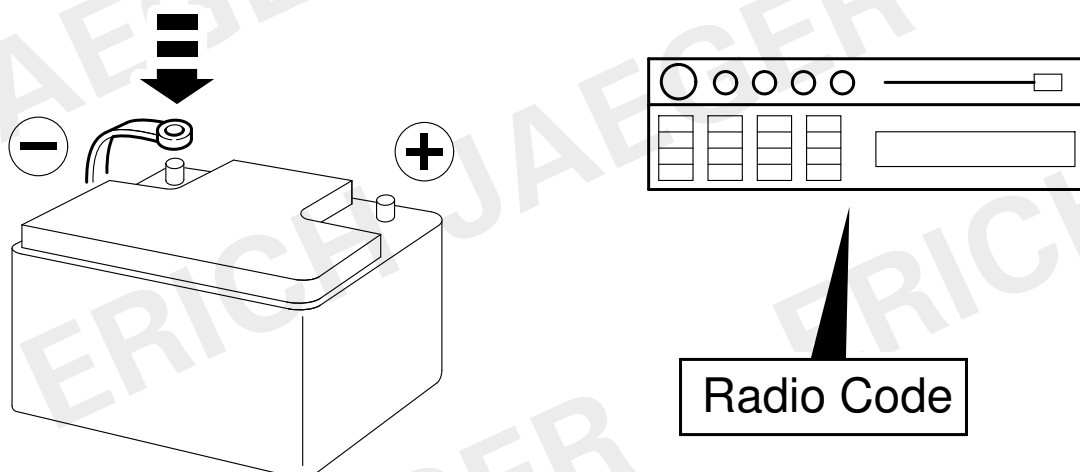


38



39

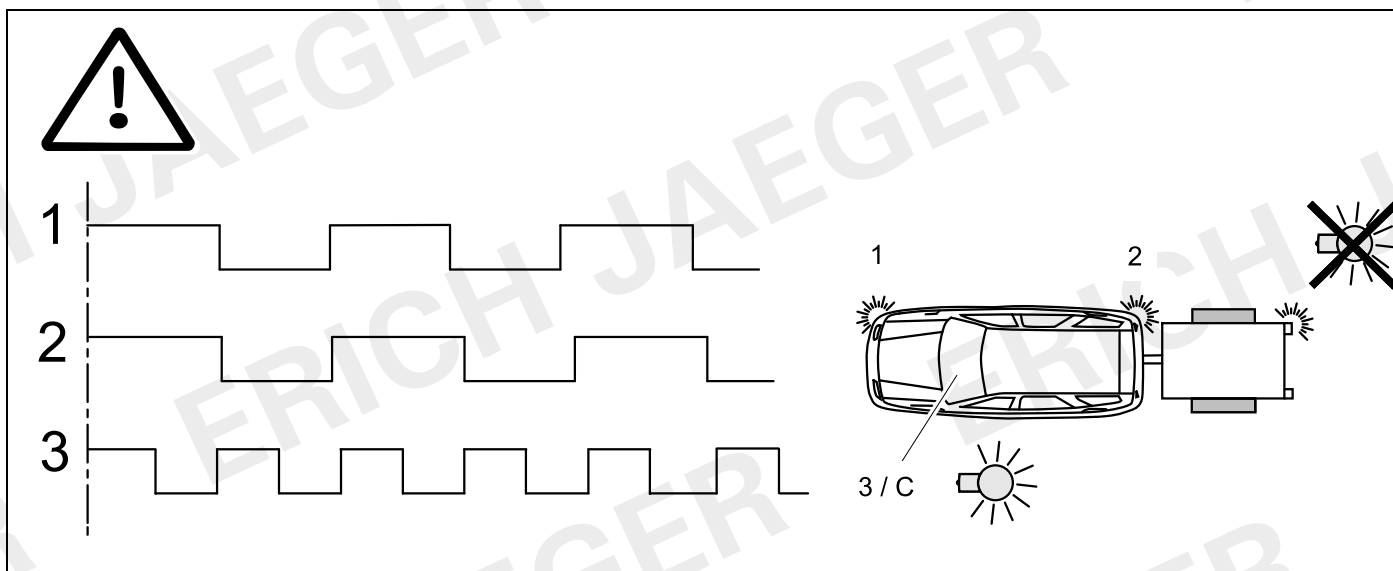




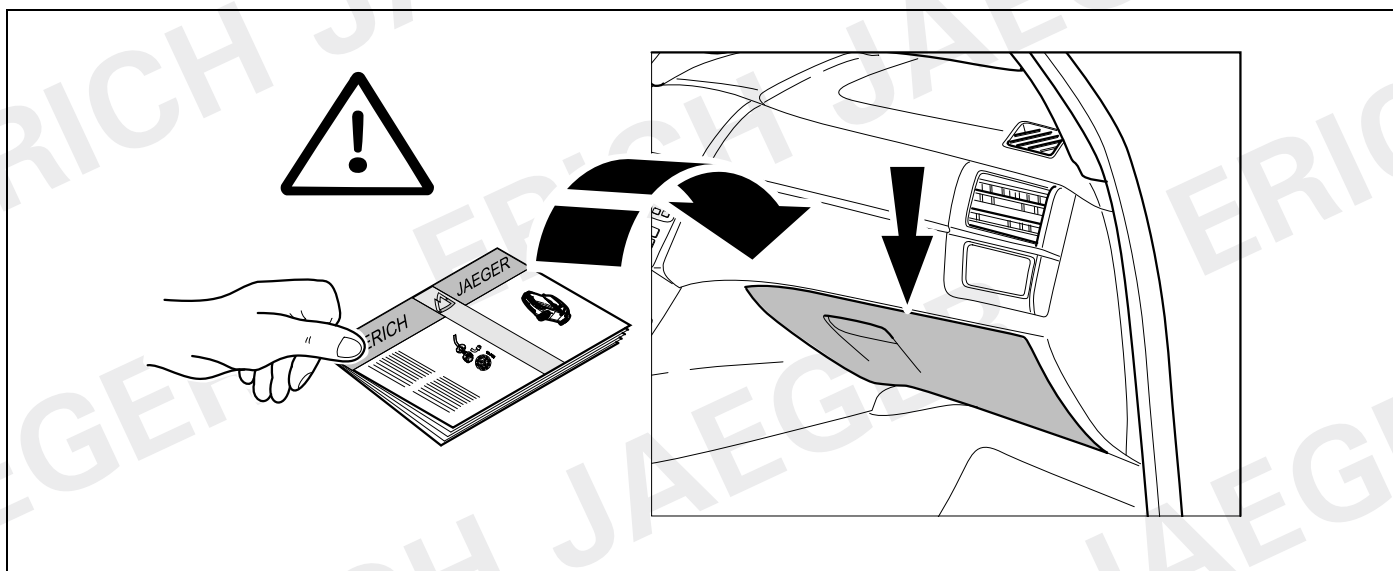
- |                               |                                |
|-------------------------------|--------------------------------|
| (D) Funktionen kontrollieren! | (PL) Sprawdź działanie!        |
| (GB) Check functions!         | (TR) İşlevleri kontrol edin!   |
| (F) Contrôler les fonctions!  | (H) Ellenőrizze a funkciókat!  |
| (NL) Controleer functies!     | (HR) Kontrolirati funkcije!    |
| (DK) Kontrollér funktionerne! | (BUL) Проверете функциите!     |
| (N) Kontrollér funksjonene!   | (RO) Controlați funcțiile!     |
| (S) Kontrollera funktionerna! | (RU) Проверить функции!        |
| (FIN) Tarkista toiminnot!     | (LT) Patikrinti funkcijas!     |
| (I) Controllare le funzioni!  | (LV) Pārbaudīt funkcijas!      |
| (E) Compruebe las funciones!  | (EST) Kontrollida funktsioone! |
| (P) Verifique as funções!     | (SLO) Preverite delovanje!     |
| (GR) Ελέγξτε τις λειτουργίες! | (SK) Skontrolovať funkcie!     |
| (CZ) Zkontrolujte funkce!     |                                |



42

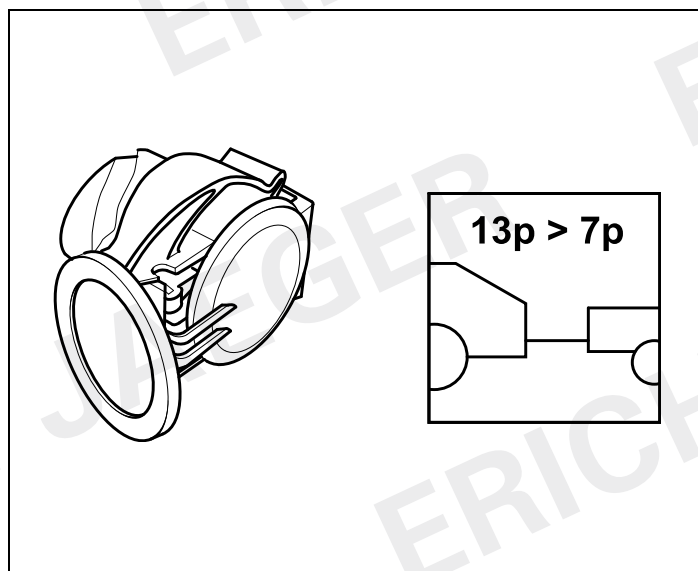


43



<b>D</b>	Änderungen bezüglich Konstruktion, Ausstattung Farbe sowie Irrtum vorbehalten. Angaben und Abbildungen unverbindlich	<b>PL</b>	Zastrzega się prawo do zmian dot. konstrukcji, wykończenia, kolorystyki oraz pomyłek. Dane i ilustracje niewiążące.
<b>GB</b>	Subject to change in terms of construction, equipment and colour, and may contain errors. The information and illustrations are non-binding.	<b>TR</b>	Tasarım, donanım ve renk bakımından değişiklik yapma hakkı ve hata ve eksiklik mahfuzdur. Veriler ve resimler bağlayıcı değildir.
<b>F</b>	sous réserve de modifications de la construction, de l'équipement, de la couleur et sous réserve d'erreurs. Les indications et les illustrations sont sans engagement.	<b>H</b>	A szerkezet, a kivitelt és a szín változtatása, valamint a változások joga fenntartva. Az adatok és az ábrák nem kötelező érvényűek.
<b>NL</b>	Wijzigingen met betrekking tot constructie, uitvoering en kleur evenals vergissingen voorbehouden. Gegevens en afbeeldingen niet bindend.	<b>HR</b>	Pravo promjena u svezi konstrukcije, opreme, boje kao i zabune oridžavamo. Podaci i ilustracije su neobavezne.
<b>DK</b>	Ændringer med hensyn til konstruktion, udstyr, farver samt fejl forbeholdes. Oplysninger og illustrationer er uforpligtende.	<b>BUL</b>	Запазени права по отношение на конструкцията, обзавеждането, цвета и грешки. Данните и изображенията не са обвързващи.
<b>N</b>	Endringer angående konstruksjon, utstyr, farge og feiltagelse forbeholdes. Opplysninger og illustrasjoner uforbindtlig.	<b>RO</b>	Ne rezervăm dreptul unor modificări ale construcției, dotării, culorii și dreptul la erori Datele indicate și imaginile sunt orientative.
<b>S</b>	Med reservation för ändringar vad det gäller konstruktion, utrustning, färg samt för misstag. Uppgifterna och bilderna är inte bindande.	<b>RU</b>	Права на внесение изменений относительно конструкции, оснащения, окраски, а также на ошибки сохраняются. Данные и иллюстрации имеют примерный характер.
<b>FIN</b>	Pidätämme oikeuden rakennetta, varustusta, väriä koskeviin sekä erehdyksestä johtuviin muutoksiin. Tiedot ja kuvat eivät ole sitovia.	<b>LT</b>	Pasilikama konstrukcijos, įrangos bei reikmenų, spalvos pakeitimų ir klaidų teisė. Duomenys ir iliustracijos neįpareigojantys.
<b>I</b>	Con riserva di modifichie relative a progettazione, dotazione, colore ed errori. Le indicazioni e figure sono fornite senza impegno.	<b>LV</b>	Tiek paturētas tiesības uz konstrukcijas, iekārtu, krāsu izmaiņām, kā arī kļūdīšanās. Dati un attēli bez saistībām.
<b>E</b>	Reservadas las modificaciones respecto a diseño, equipamiento, color, así como error. Indicaciones y figuras sin compromiso.	<b>EST</b>	Konstruktsiooni, varustuse ja võrvi osas muudatused ning eksimine lubatud. Andmed ja joonised on mittesiduvad.
<b>P</b>	Reservamos o direito de alterações relativamente ao desenho, equipamento, cor, bem como de erro. Os dados e as gravuras não implicam compromisso da nossa parte.	<b>SLO</b>	Zadržana pravica do sprememb glede konstrukcije, opreme, barve ter pomote. Podatki in slike so neobvezne.
<b>GR</b>	Διατηρώμε κάθε επιφύλαξη ως προς αλλαγές σε σχέση με κατασκευή, εξοπλισμό, διαρρύθμιση, χρωματισμούς και λάθη παραδρομής.	<b>SK</b>	Zmeny, ktoré sa týkajú konštrukcie, vybavenia, farby, ako aj omyly sú vyhradené. Údaje a zobrazenia sú nezáväzné.
<b>CZ</b>	Změny, týkající se konstrukce, vybavení, barvy, jakož i omyly jsou vyhrazeny. Údaje a vyobrazení jsou nezávazné.		

**311069**



**311052**

