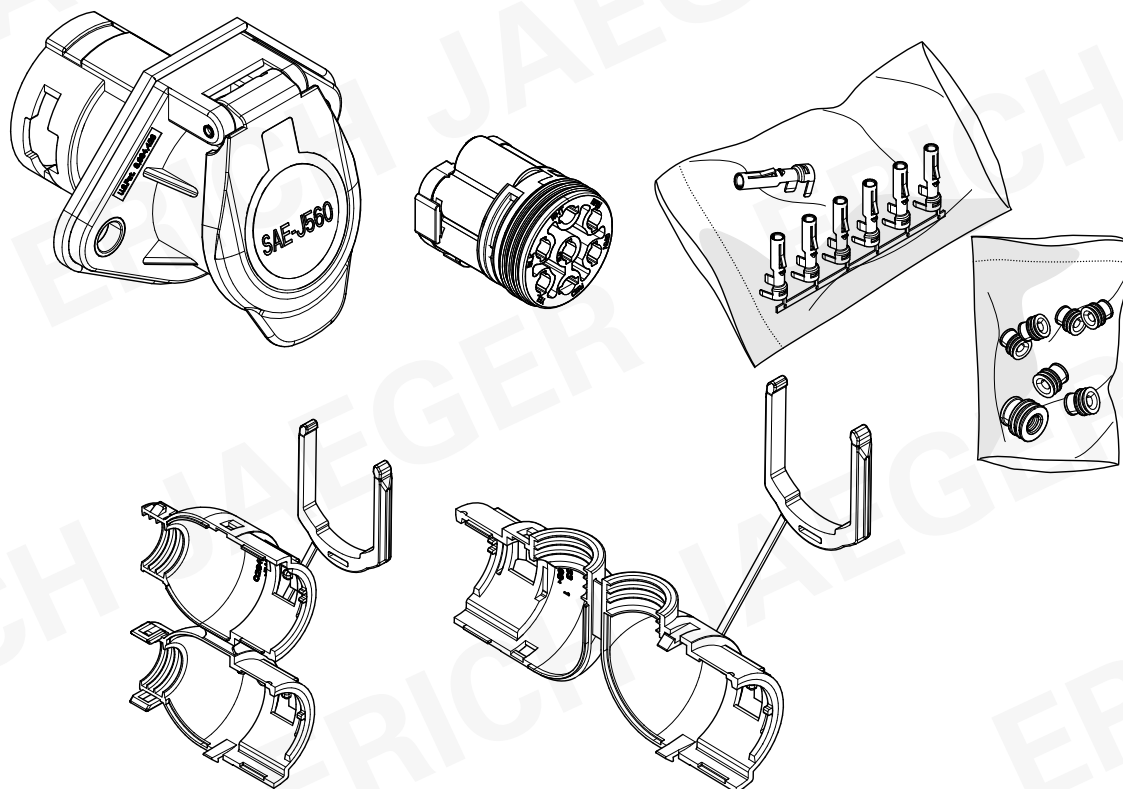




ERICH JAEGER



7P / 12V SAE J560 Dose dicht

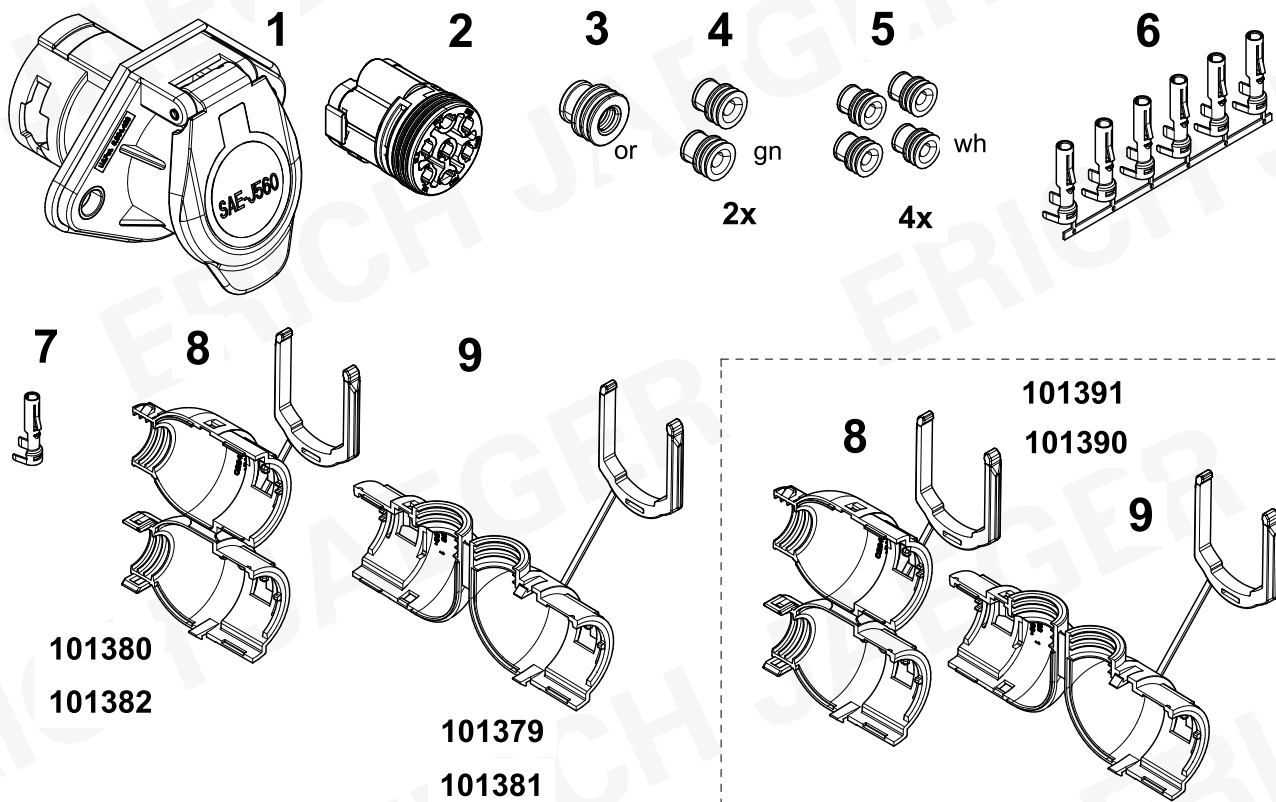
101390; 101379;101380

7P / 12V SAE J560 Socket sealed

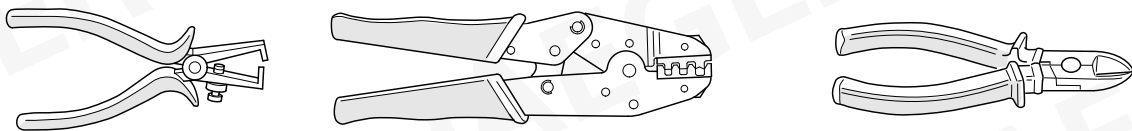
101391;101381;101382

- | | |
|---------------------------------|--|
| (D) Einbauanleitung | (PL) Instrukcja montażu |
| (GB) Installation instructions | (TR) Montaj talimatı |
| (F) Consignes de montage | (H) Beépítési útmutató |
| (NL) Montagehandleiding | (HR) Upute o ugradnji |
| (DK) Montagevejledning | (BUL) Инструкция за монтаж |
| (N) Monteringsinstruksjon | (RO) Instrucțiuni de montaj |
| (S) Installationsanvisning | (RU) Инструкция по монтажу и установке |
| (FIN) Asennusohje | (LT) Montavimo informacija |
| (I) Istruzioni per il montaggio | (LV) Iemontēšanas pamācība |
| (E) Instrucciones de montaje | (EST) Paigaldusjuhend |
| (P) Instruções de montagem | (SLO) Navodilo za vgradnjo |
| (GR) Οδηγίες εγκατάστασης | (SK) Montážny návod |
| (CZ) Návod k montáži | |

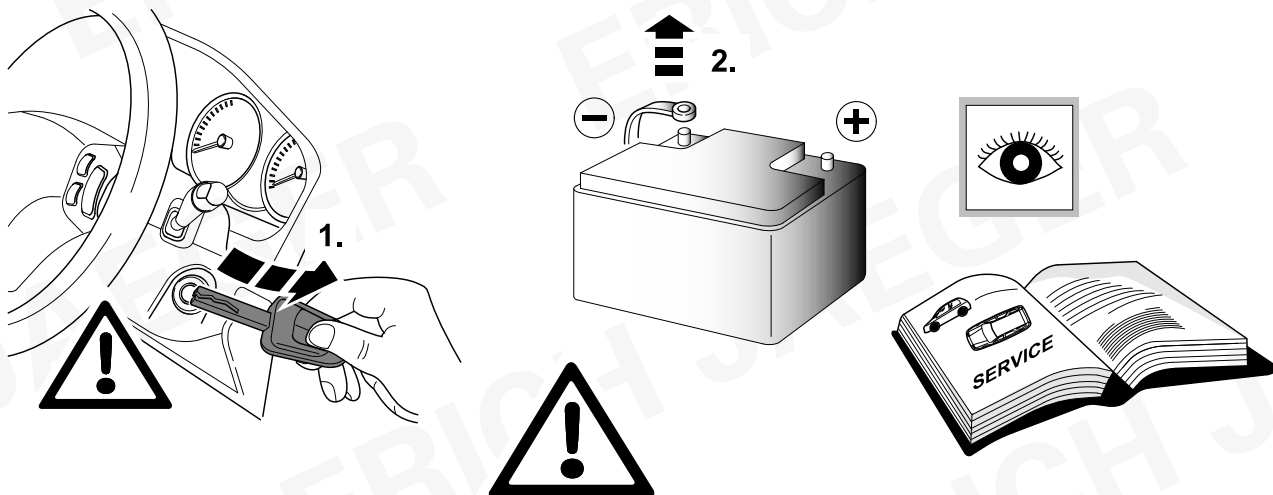


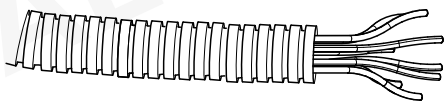
KIT

TOOLS



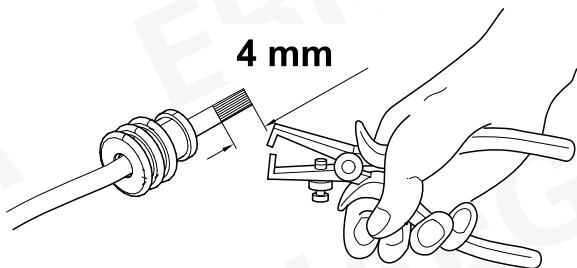
1





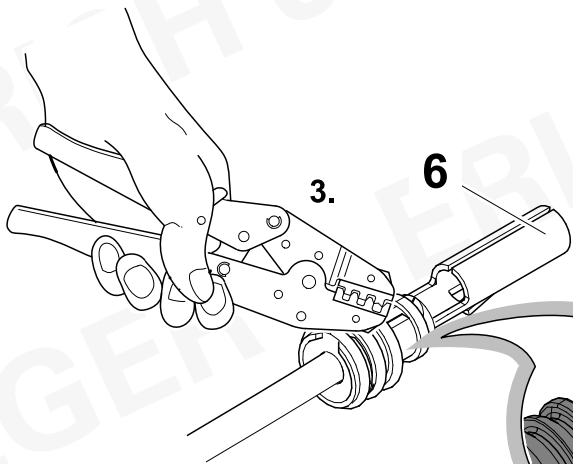
2.

4 mm



3.

6



1.



3



4



4



5



5



5



5



wh

bu

rd

bk

ye

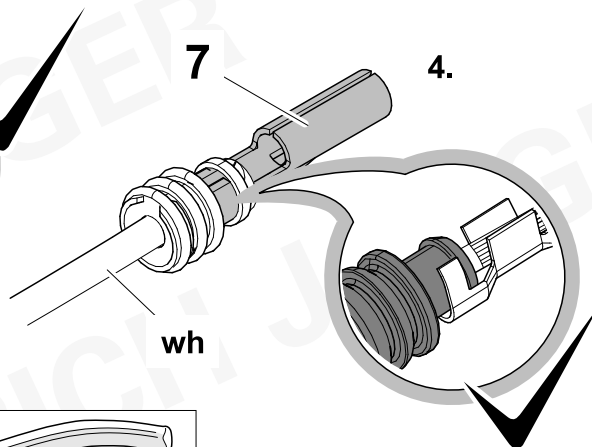
gn

bn

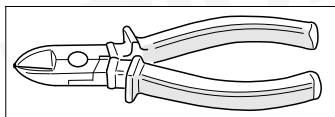


7

4.

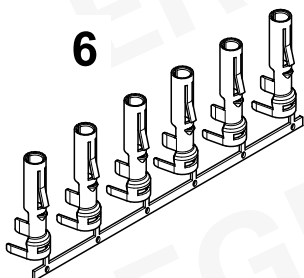


wh



6

7



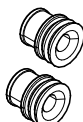
3

4

5



or



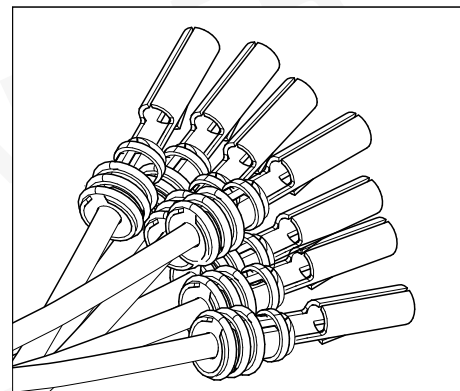
2x

gn



4x

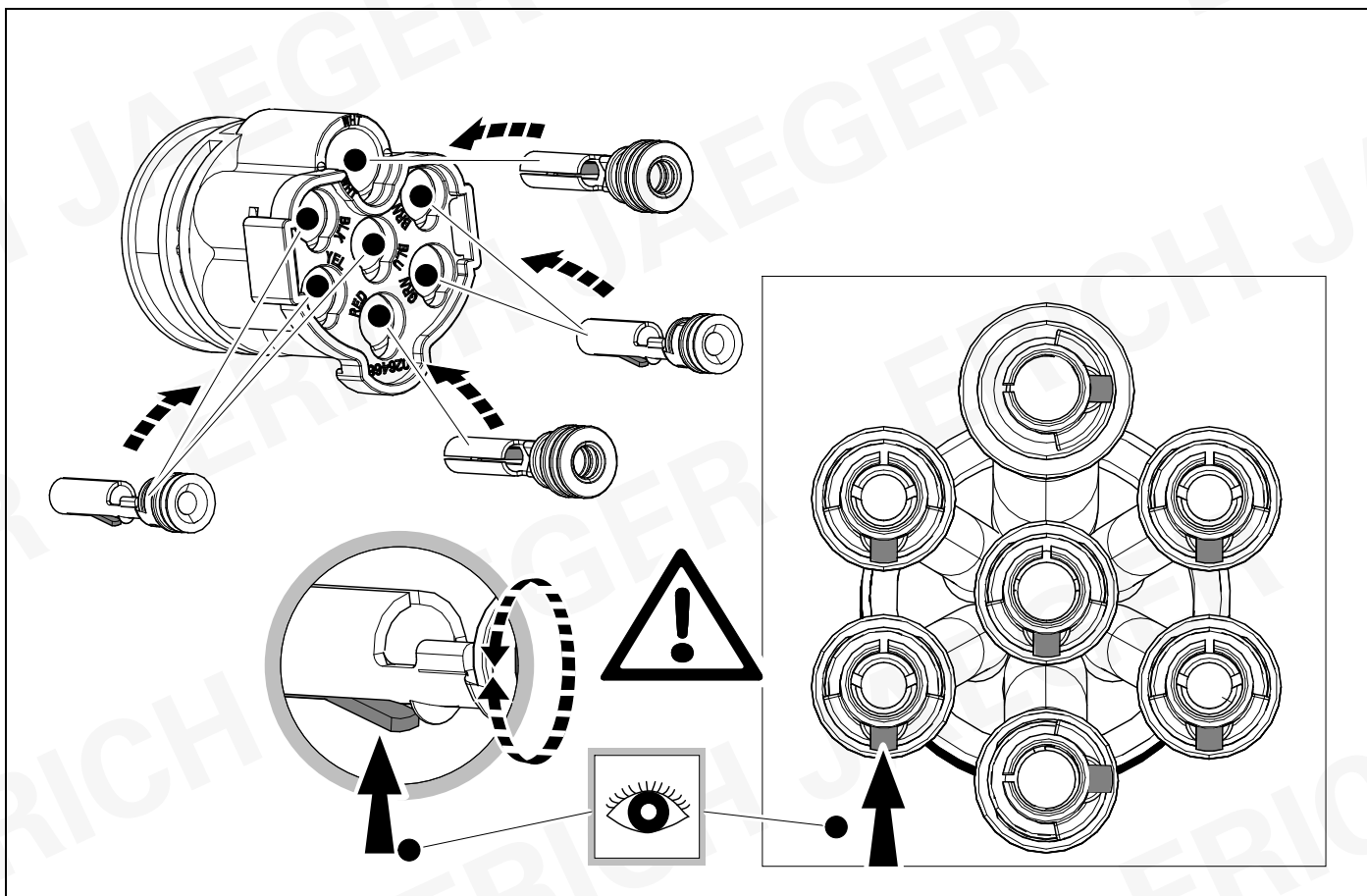
wh



3



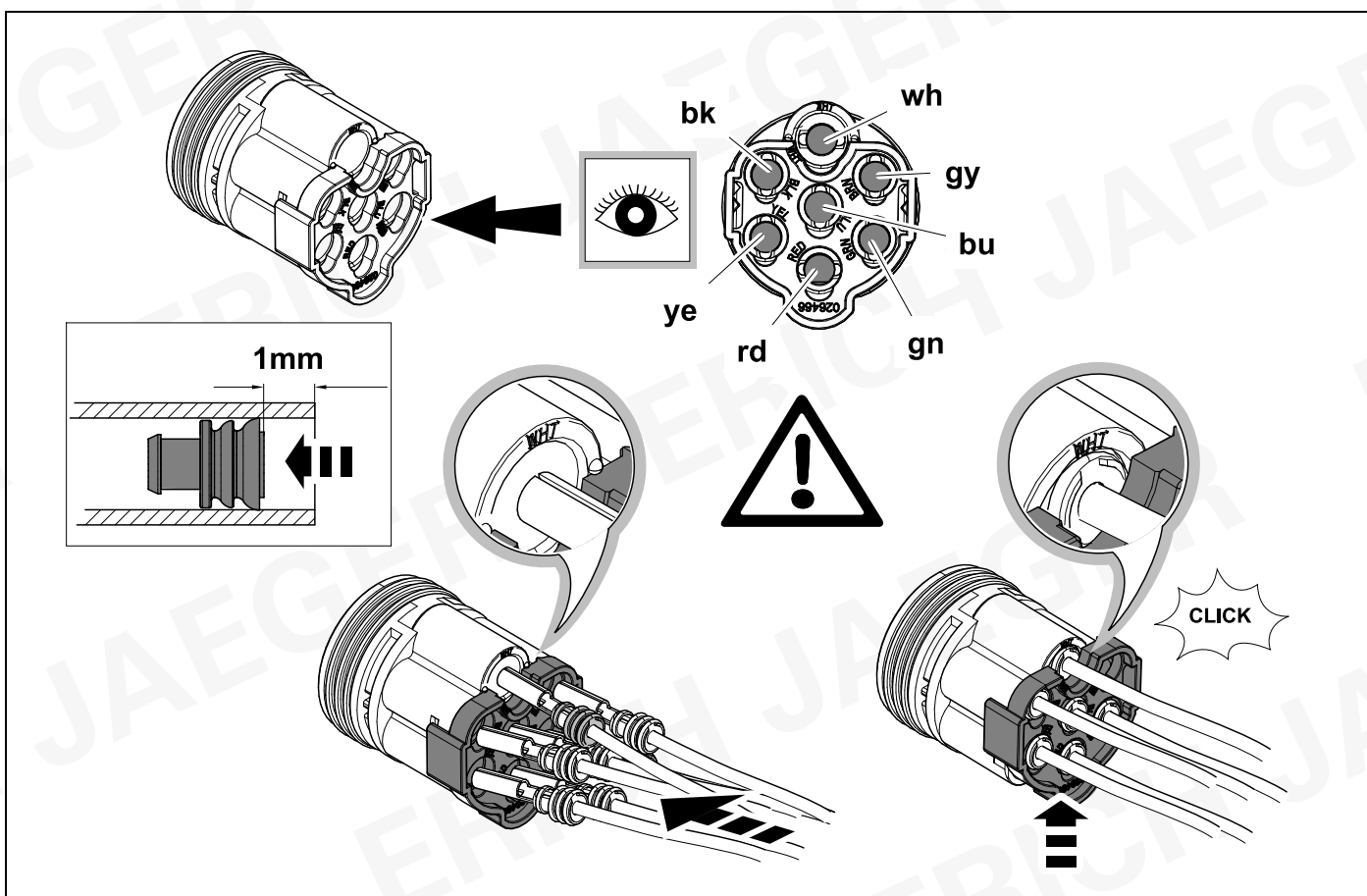
5



4



7



5**Contact allocation 7P Primary
SAE J650****7**

1	wh	Ground return to towing vehicle
2	bk	Clearance, side marker, and identification lamps
3	ye	Left turn signal and hazard lamps
4	rd	Stop lamps and Antilock Breaking System (ABS) (Secondary Power)
5	gn	Right turn signal and hazard lamps
6	bn	Tail and license plate, clearance and/or side marker lamps
7	bu	Continuous ABS primary power/auxiliary devices

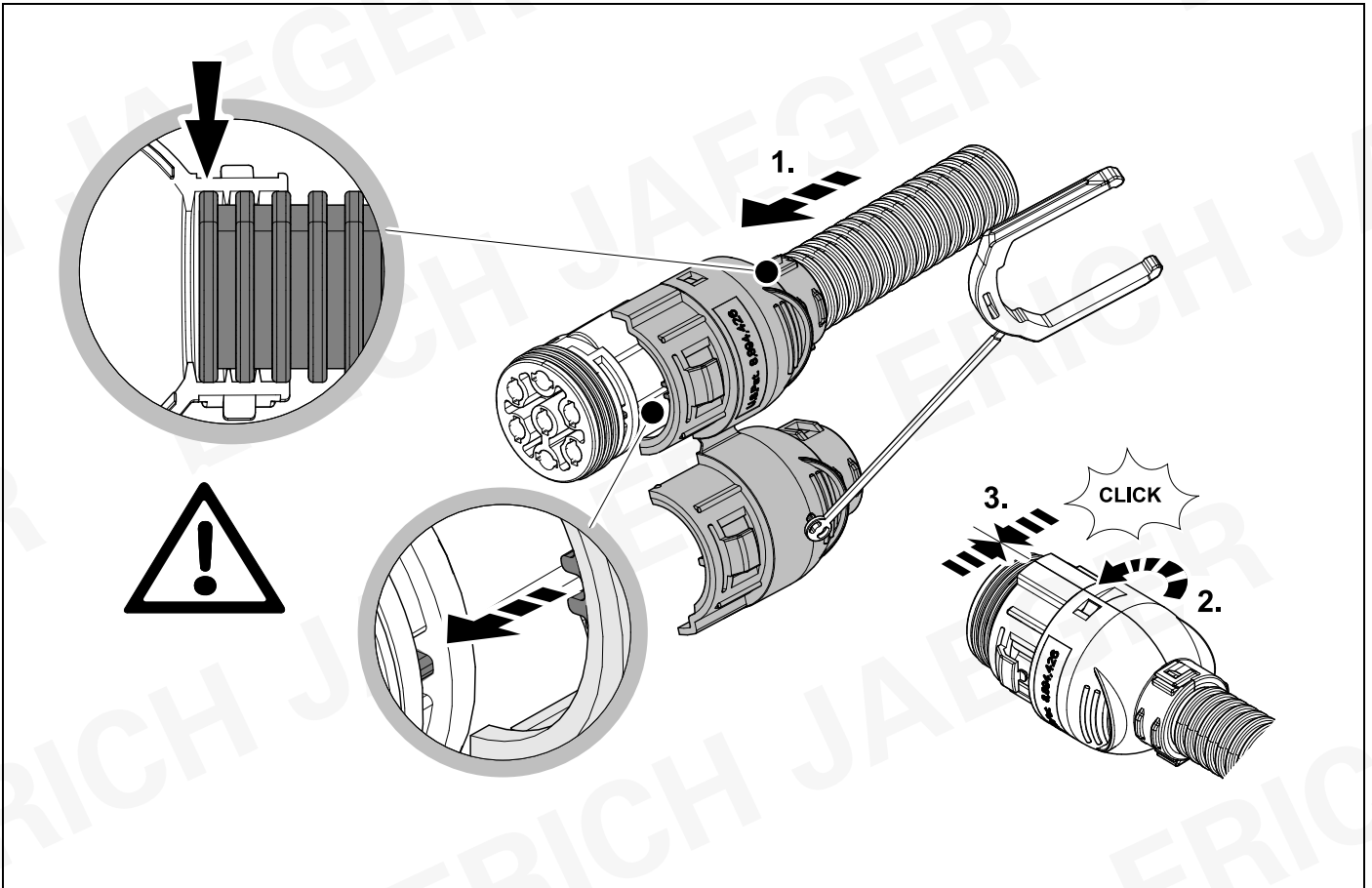
6**Contact allocation 7P Auxiliary
SAE J650****7**

1	wh	Ground return to towing vehicle
2	bk	Cab switches auxiliary power
3	ye	ABS malfunction signal to cab
4	rd	Constant or ignition power
5	gn	Unassigned
6	bn	Unassigned
7	bu	Unassigned

7	bk	wh	gy	gn	rd	ye	bu
(D)	schwarz	weiß	grau	grün	rot	gelb	blau
(GB)	black	white	grey	green	red	yellow	blue
(F)	noir	blanc	gris	vert	rouge	jaune	bleu
(NL)	zwart	wit	grijs	groen	rood	geel	blauw
(DK)	sort	hvid	grå	grøn	rød	gul	blå
(N)	svart	hvit	grå	grønn	rød	gul	blå
(S)	svart	vit	grå	grön	röd	gul	blå
(FIN)	musta	valkoinen	harmaa	vihreä	punainen	keltainen	sininen
(I)	nero	bianco	grigio	verde	rosso	giallo	blu
(E)	negro	blanco	gris	verde	rojo	amarillo	azul
(P)	preto	branco	cinzento	verde	vermelho	amarelo	azul
(GR)	μαύρος	λευκός	Γκρι	πράσινος	κόκκινος	κίτρινος	μπλε
(PL)	czarny	biały	szaro	zielony	czerwony	żółty	niebiesko
(CZ)	černý	bílý	šedý	zelený	červený	žlutý	modrý
(TR)	siyah	beyaz	gri	yeşil	kırmızı	sarı	mavi
(H)	fekete	fehér	szürke	zöld	piros	sárga	kék
(HR)	crno	bijelo	sivo	zeleno	crveno	zuto	plavo
(BUL)	черен	бял	сив	зелен	червен	жълт	син
(RO)	negru	alb	gri	verde	roșu	galben	albastru
(RU)	черный	белый	серый	зеленый	красный	жёлтый	голубой
(LT)	juoda	balta	pilka	žalia	raudona	geltona	mėlyna
(LV)	melna	balta	pelēka	zaļa	sarkana	dzeltena	zila
(EST)	must	valge	hall	roheline	punane	kollane	sinine
(SLO)	črna	bela	siva	zelena	rdeča	rumena	modra
(SK)	čierny	biely	šedý	zelený	červený	žltý	modrý

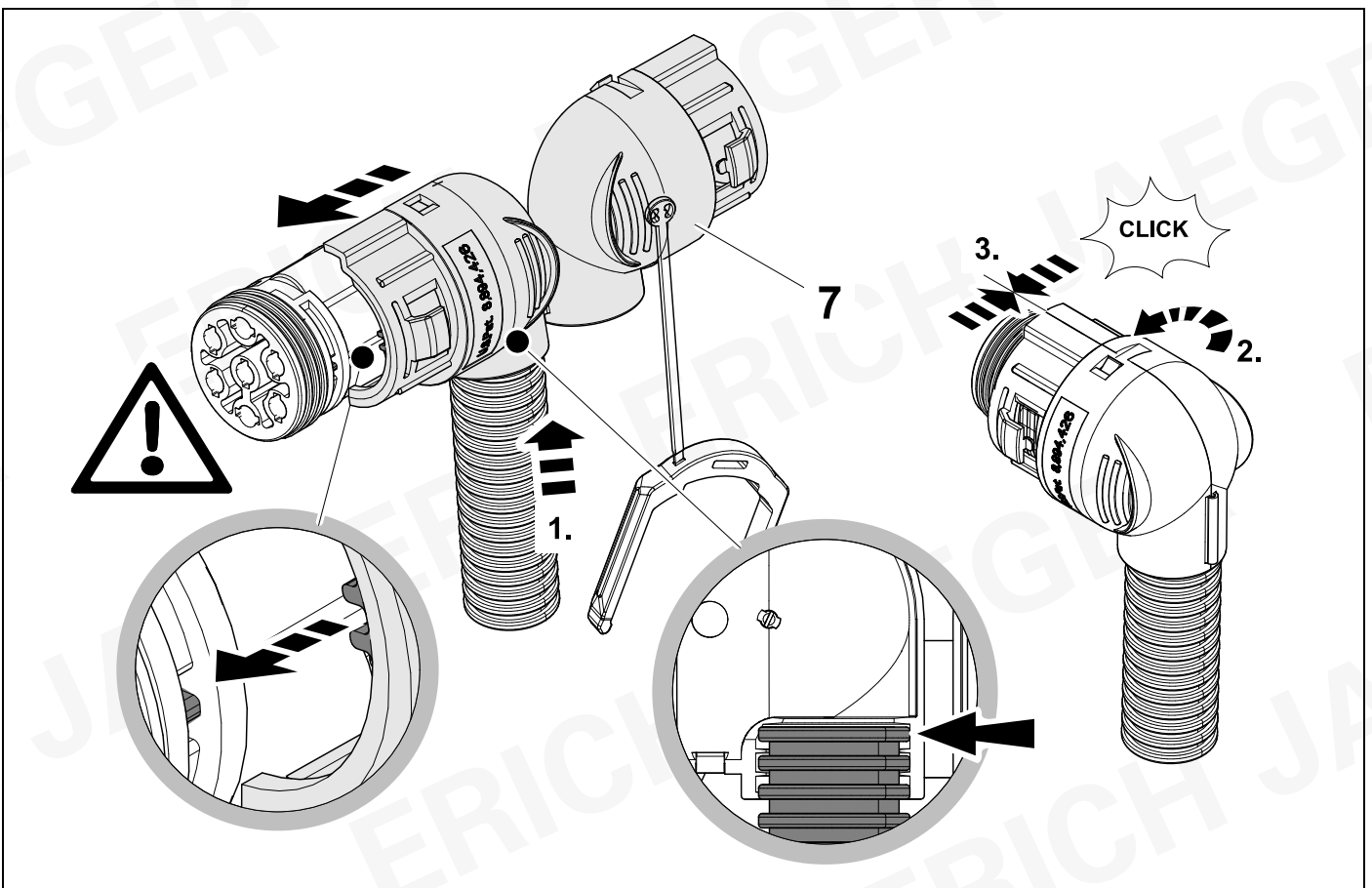
8

OPTION 1

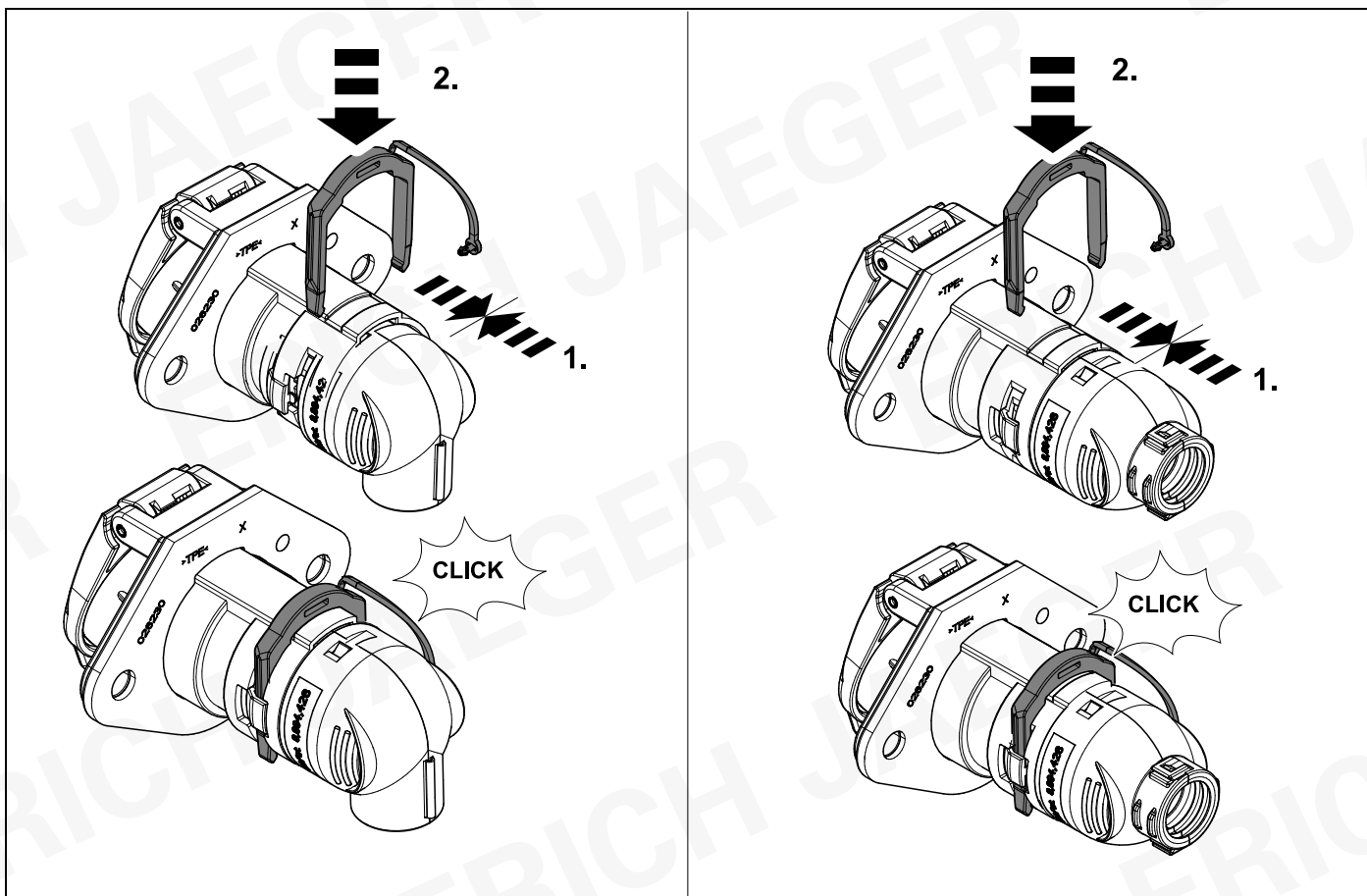


9

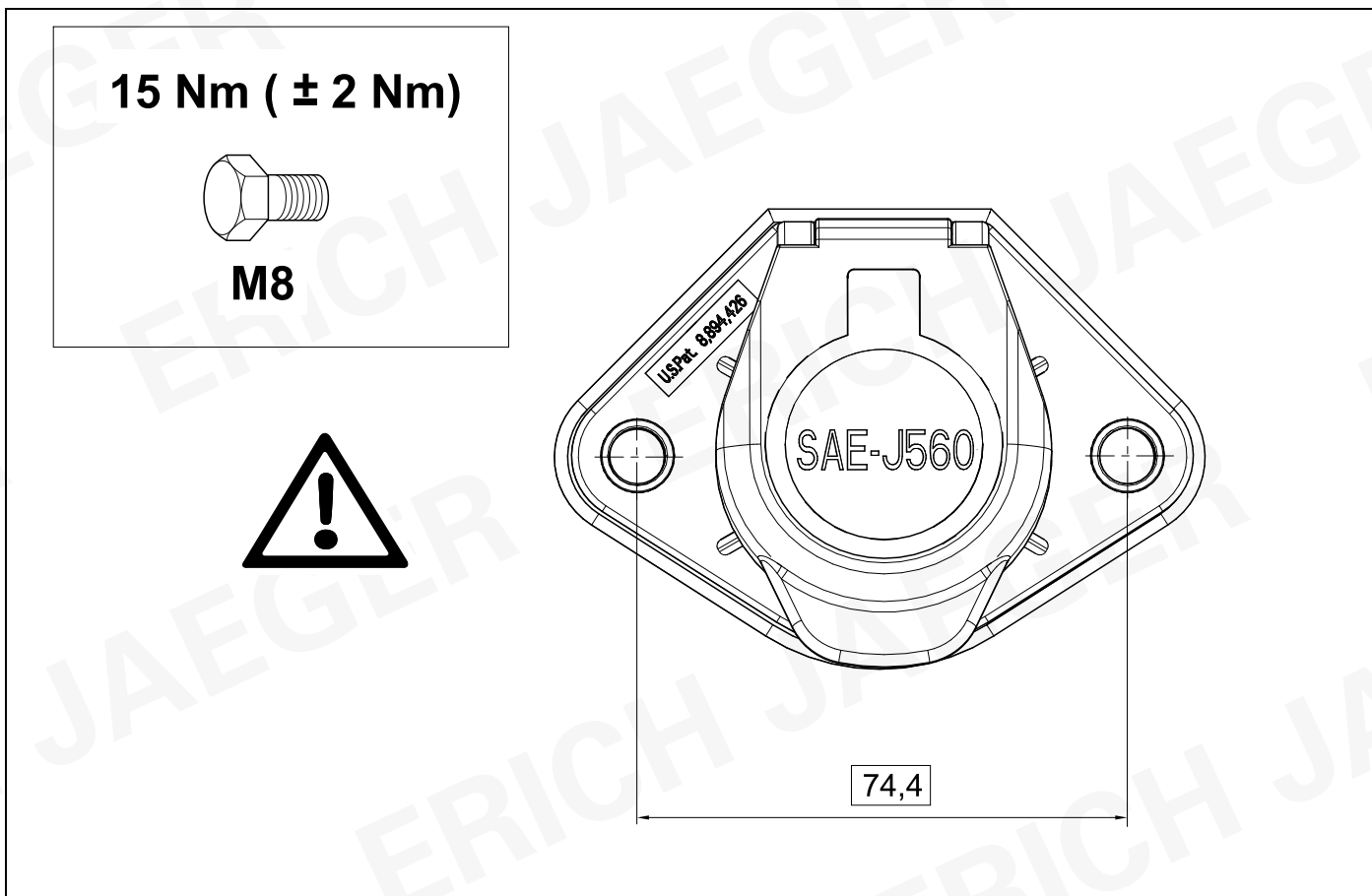
OPTION 2



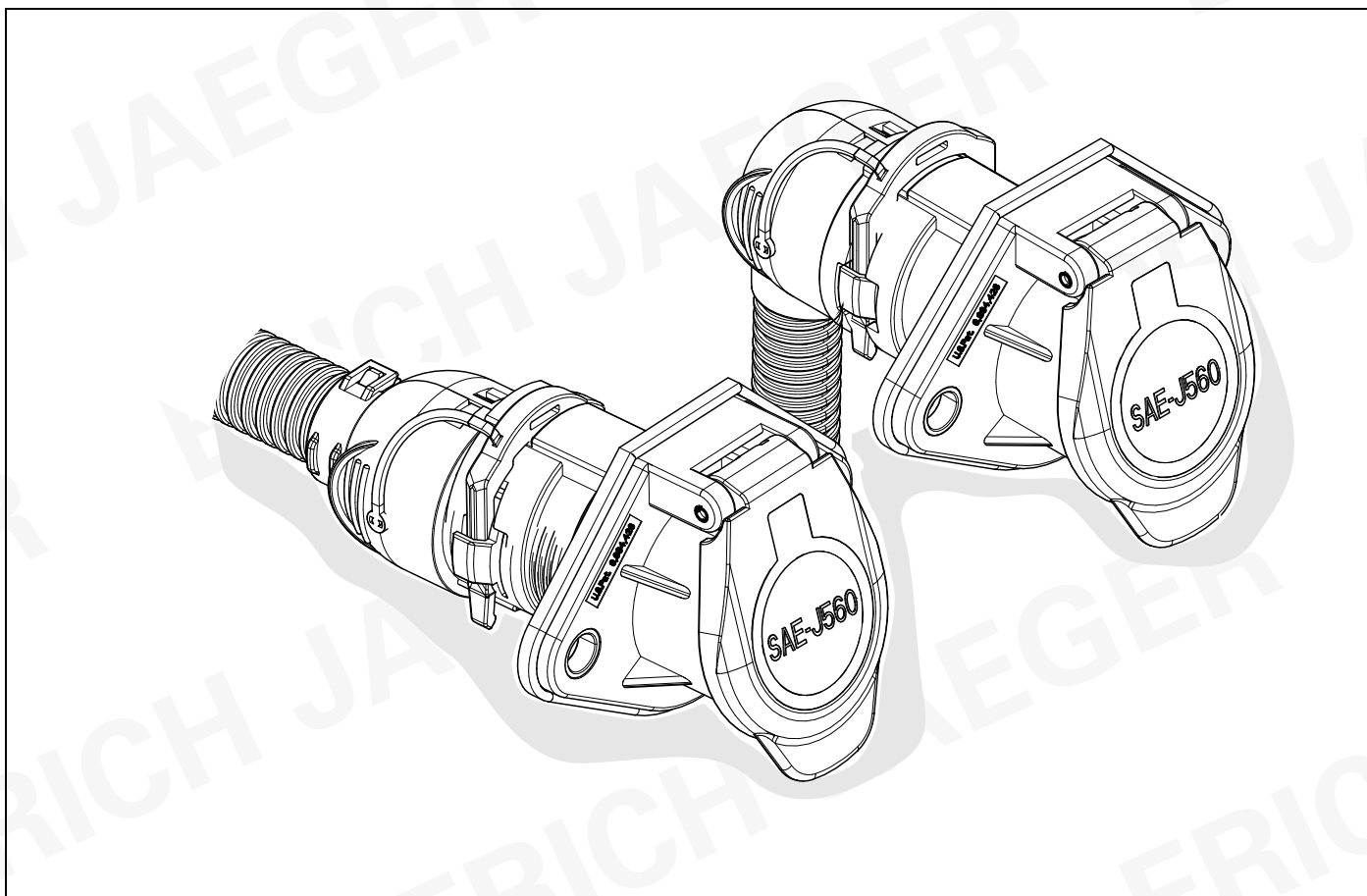
10



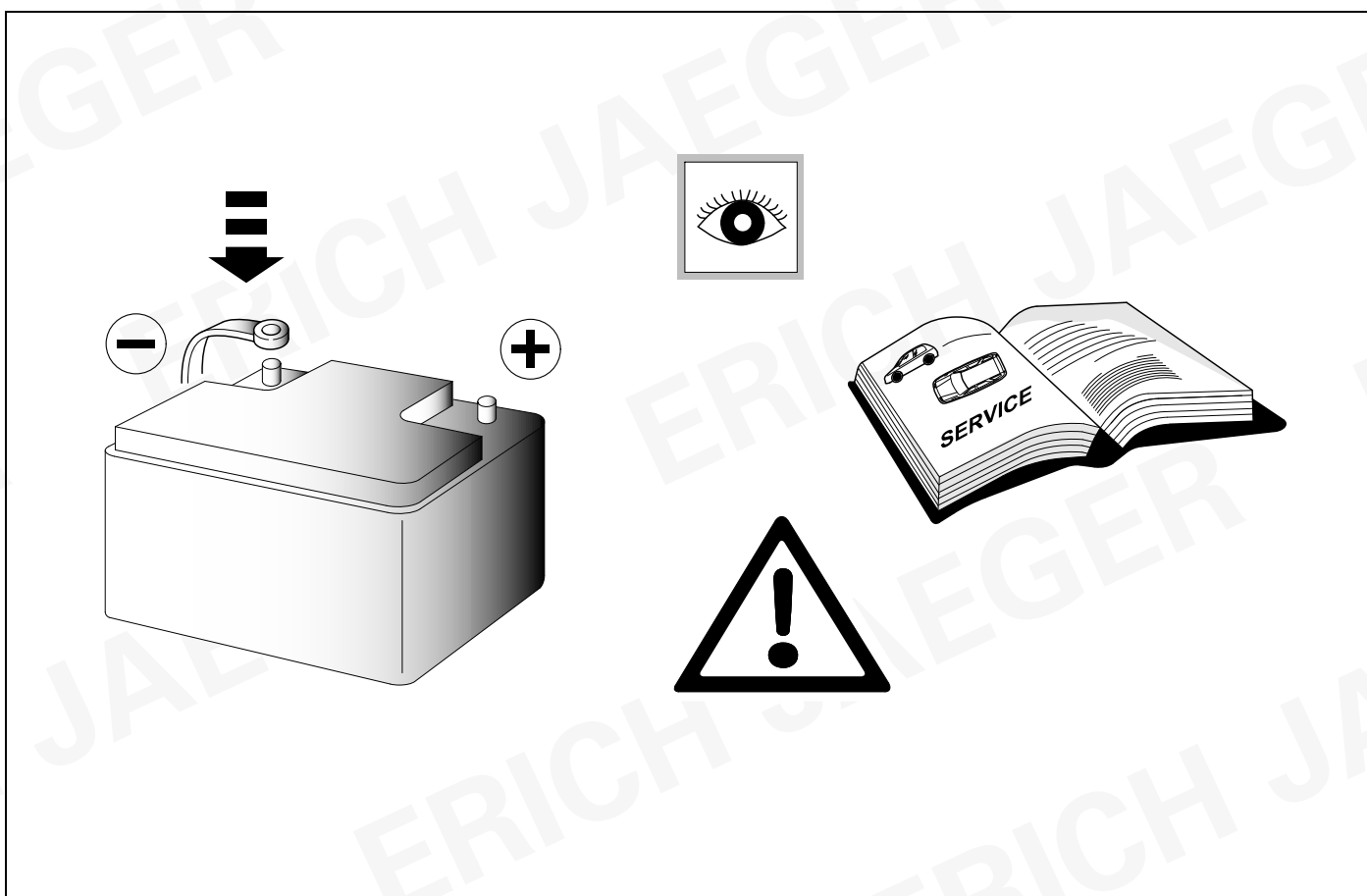
11



12



13



14 CHECK

