



# TECHnote

## 4-pin/12V JAEGER Expert Socket - SAE J1239

ERICH JAEGER has developed a new innovative version of the 4 way SAE J1239 socket. It is the first stand alone socket with a spring loaded cover.

This connector type is one of the most common connectors in North America. It ensures the required signals to meet all regulatory requirements in the United States.

Connection for all types of trailers whose gross weight does not require automatic trailer braking.

Flexible mounting clips are integral for stable installation in the mounting bracket.

Based on the JAEGER Expert series, the ERICH JAEGER 4P/12V socket (according to SAE J1239) is 100% watertight according to IPX7 and IPX9K.



### Color Codes

- White: Ground connected to chassis
- Brown: Tail lights, running lights and plate lamp
- Yellow: Left turn signal, brake lights
- Green: Right turn signal, brake lights

### Highlights

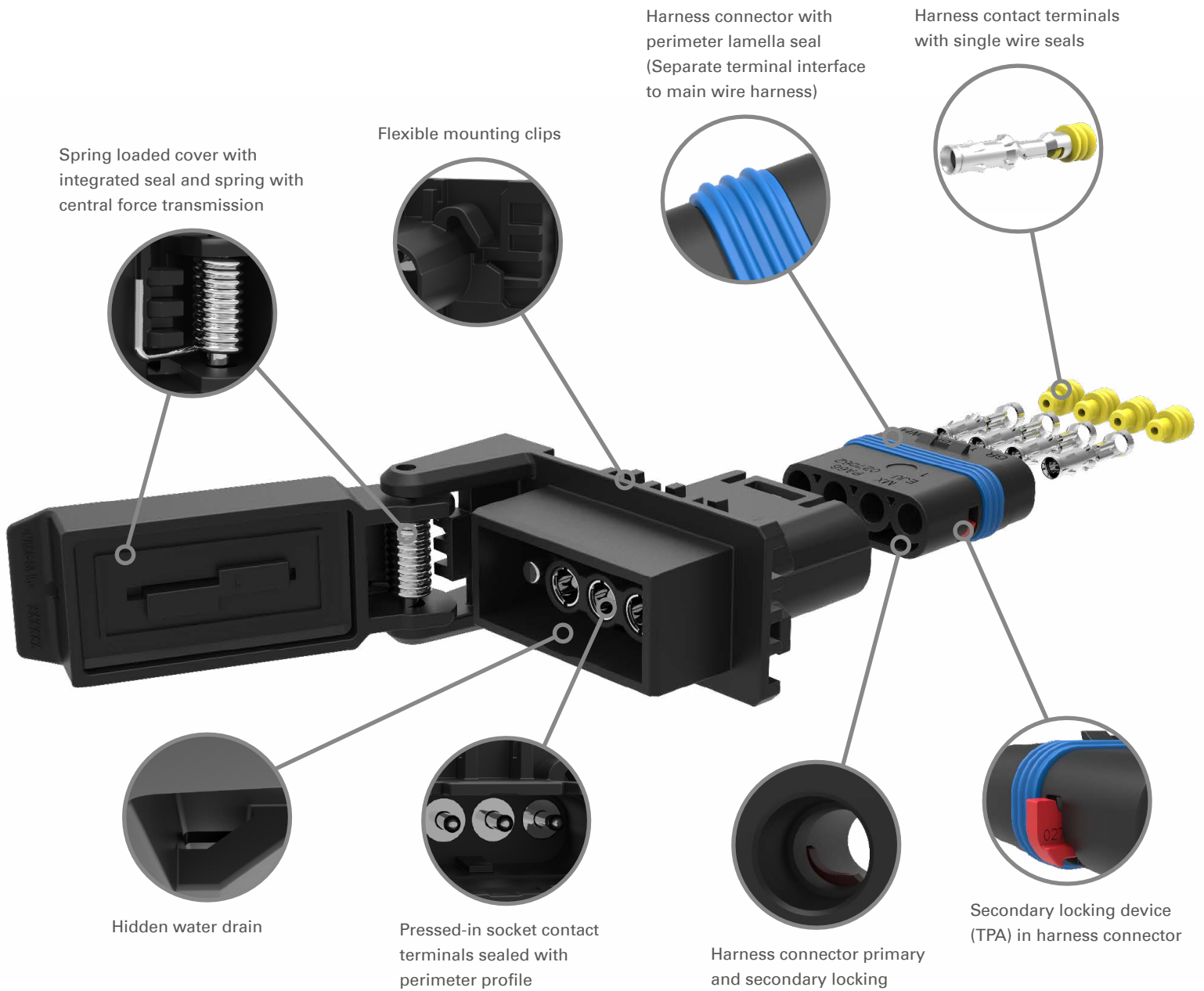
- 100% water proof from socket interface J1239 to wire harness side, even when a plug is connected
- 100% water proof from wire harness side though to socket terminals
- Modular system concept for OEM and 1stTier for 100% process control
- Easy handling for socket exchange in case of repair service
- New design compatible with existing Ford style mounting plates

### SCAN to WATCH





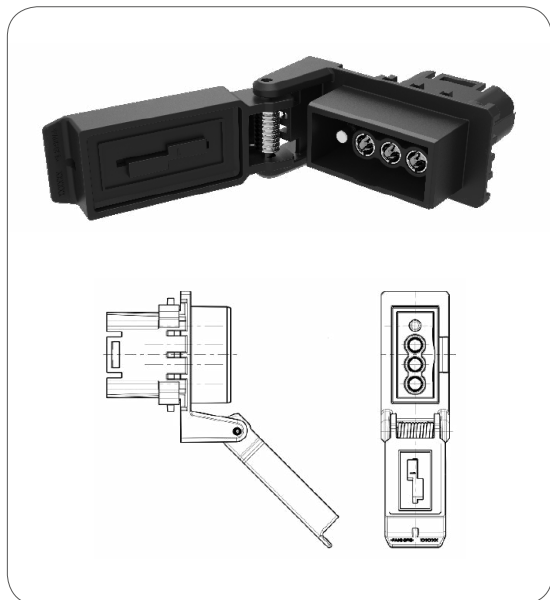
## 4-pin/12V JAEGER Expert Socket - SAE J1239





## 4-pin/12V JAEGER Expert Socket - SAE J1239

### Model Versions

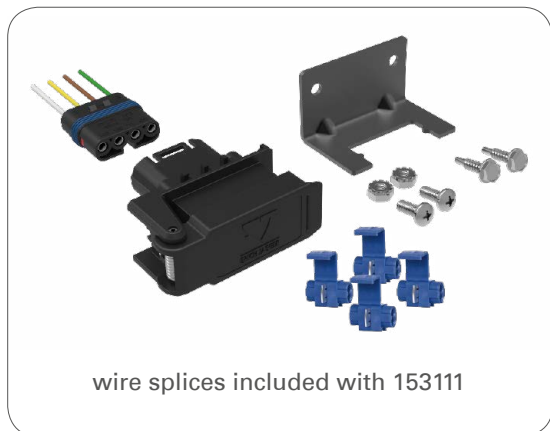


4P/12V JAEGER Expert socket housing - SAE J1239

- Water tightness according to IPX7 & IPX9K
- Temperature range: -40°C to +85°C
- Current: 15 A (1,5mm<sup>2</sup>), 20 A (2,5mm<sup>2</sup>)

hinge location left (with ERICH JAEGER branding)

hinge location right (with ERICH JAEGER branding)



4P/12V JAEGER Expert socket housing - SAE J1239

- Water tightness according to IPX7 & IPX9K
- Temperature range: -40°C to +85°C
- Current: 15 A (1,5mm<sup>2</sup>), 20 A (2,5mm<sup>2</sup>)

Contact insert with crimped wires (8 in. length)

With mounting kit

- Mount plate
- 2x Screws, self drilling, #10-16 x 0.75 in.
- 2x Screws, pan head, #10-32 x 0.50 in.
- 2x K-lock nuts, #10-32

hinge location left (with ERICH JAEGER branding)

hinge location left (with ERICH JAEGER branding)  
with 4 wire splices

hinge location right (with ERICH JAEGER branding)

Part No.

383348

on demand

153103

153111

on demand

## 4-pin/12V JAEGER Expert Socket - SAE J1239

### Model Versions

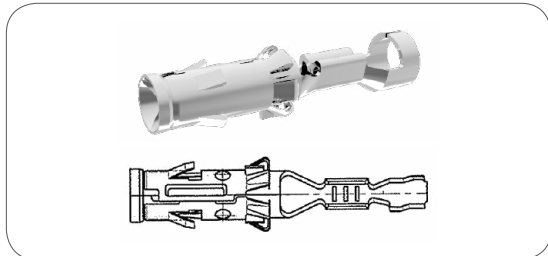


4P/12V 100% waterproof „JAEGER Expert“ contact insert (SAE J1239)

delivery condition: TPA unlocked

Part No.

383109

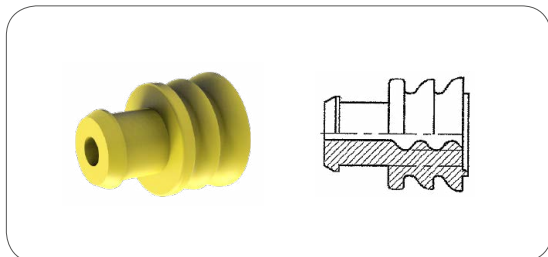


Crimp contact sleeve

for wire cross-sectional area:

0,5 - 1,0mm<sup>2</sup>  
>1,0 - 2,5mm<sup>2</sup>

053861-4  
052675-4



Single wire seal

for wire cross-sectional area:

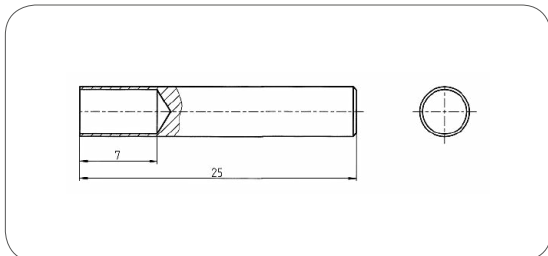
0,5 - 1,0mm<sup>2</sup>  
>1,0 - 2,5mm<sup>2</sup>

053862  
055632



Crimping tool

361063



Ejector bushing

026321