



TECHnote

7-pin + 4-pin/12V Combo-Socket - SAE J2863 + SAE J1239

ERICH JAEGER has developed an optimized trailer socket combining the standards SAE J1239 and J2863. The socket enables vehicle operators to couple any kind of trailer to their SUV, car or pickup truck without the use of an adapter. The 4-pin connector according to SAE J1239 is intended to connect all types of trailers whose gross weight does not require trailer braking (to a maximum of 10,000 lb). The 7-pin connector according to SAE J2863 is necessary whenever a trailer exceeds this weight thus requiring trailer braking.

The trailer socket by ERICH JAEGER is water and corrosion resistant due to a number of features including the use of high quality double-plated contacts, optimized cover and interior seals and dedicated drainage holes according to the mounting position of the socket.

A patented closing system using push rods effectively prevents the covers of the two connector systems to be opened simultaneously. The whole assembly fits the car manufacturers' original mounting brackets and - as usual for ERICH JAEGER products - comes in OEM quality.



Highlights

- Tested to USCAR 2 and SAE J2863 standards for RV and light truck trailers and SAE J1239 for automotive trailers
- Combo-Socket for both applications eliminates the necessity for an adapter
- Double-plated contacts for corrosion resistance
- Design compatible with existing OE mounting systems and harness connector APTIV (Delphi)
- Mounting brackets enable an installation without tools
- Optimized water protection due to deep cover flanges, molded seals with design specific contours and socket housing sealed with two-part epoxy



TECHnote

7-pin + 4-pin/12V Combo-Socket - SAE J2863 + SAE J1239

Model Versions



7+4P/12V Combo-Socket (SAE J1239, SAE J2863)

- with double-plated contacts (tin/nickel)
- patented closing system
- size of plug-in contacts: 1x 6.3mm, 6x 2.8mm

with drainage holes for universal mounting

bulk packaging
PE bag

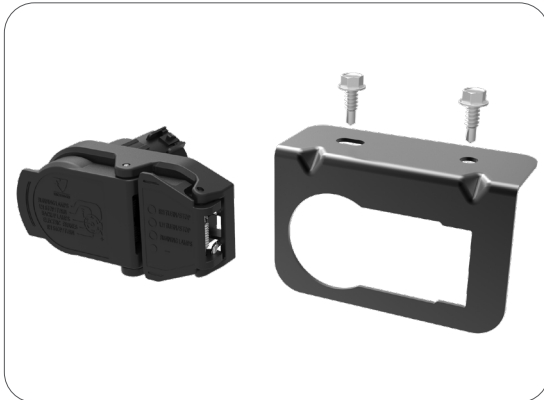
Part No.

101374

101430

with drainage holes for horizontal mounting, bulk packaging

101378



7+4P/12V Combo-Socket (SAE J1239, SAE J2863)

- with double-plated contacts (tin/nickel)
- patented closing system
- size of plug-in contacts: 1x 6.3mm, 6x 2.8mm

with drainage holes for horizontal mounting
including mount plate and screws

bulk packaging
PE bag

101424

101431



7+4P/12V Combo-Socket (SAE J1239, SAE J2863)

- with double-plated contacts (tin/nickel)
- patented closing system
- size of plug-in contacts: 1x 6.3mm, 6x 2.8mm

with drainage holes for vertical mounting, bulk packaging

101376



TECHnote

7-pin + 4-pin/12V Combo-Socket - SAE J2863 + SAE J1239

Contact allocation according to SAE J2863



Contact No.	Function	Core insulation colour
1	Left turn/stop	yellow
2	"-" Ground	white
3	Electric brakes	blue
4	Right turn/stop	green
5	"+" Battery	orange
6	Running lights	brown
7	Revers lights	gray

Contact allocation according to SAE J1239



Contact No.	Function	Core insulation colour
1	Ground	white
2	Tail and license lamp circuit	brown
3	Left turn and stop circuit	yellow
4	Right turn and stop lamp circuit	green



TECHnote

7-pin + 4-pin/12V Combo-Socket - SAE J2863 + SAE J1239

